

**LALA RURAL COLLEGE**  
**AFFILIATED TO ASSAM UNIVERSITY, SILCHAR**



SUPPORTING DOCUMENTS FOR NAAC SELF STUDY REPORT (SSR)  
(2<sup>ND</sup> CYCLE)  
PERIOD: 2017-2022

CRITERION 2	KEY INDICATOR: 2.3
TEACHING- LEARNING AND EVALUATION	TEACHING- LEARNING PROCESS
METRIC NUMBER: 2.3.1	STUDENT CENTRIC METHODS, SUCH AS EXPERIENTIAL LEARNING, PARTICIPATIVE LEARNING AND PROBLEM-SOLVING METHODOLOGIES ARE USED FOR ENHANCING LEARNING EXPERIENCES AND TEACHERS USE ICT- ENABLED TOOLS INCLUDING ONLINE RESOURCES FOR EFFECTIVE TEACHING AND LEARNING PROCESS

PREPARED AND SUBMITTED  
BY  
LALA RURAL COLLEGE

## REPORT ON ONE DAY EDUCATIONAL TOUR AT BADARPUR

Ref no: Resolution no.01 of Departmental meeting Dated 01/02/2018

Bengali department of Lala Rural College has organized an One Day Education tour with 08 numbers of Honours students of each semester on 27/02/2018.

The journey was started from the college at 9 a.m with two faculty members of our department namely Dr. Lakshmi Nath and Dr. Mayurakshi Nath as Prof-in-charge of this tour.

The team at first reached at Siddheswar temple Thandapur(Panchgram). Everyone knows that it is a holy place for Hindu religion and it is also well known as Kapil Ashram. Where student enjoyed with the natural beauty as well as divine beauty of this place.

We,then started for Badarpur Fort and reached there at 11 a.m After reaching the spot we took our breakfast and then started exploring the scenic beauty and historical importance of the spot. In course of our visit we witnessed remaining of the Cachari kingdom, their arts and architecture.

At 1 a.m we started towards Nabin Chandra College Badarpur and reached at 1.15 p.m. and where we met with the principal of this college and express intention to visit the college, principal agreed and accompanied us to various Department of the college, Central library and canteen. We witnessed many new things that encouraged us to have some new initiative in our college, we had a beautiful photo session with principle and other staff of the college.



After that we thanked the Hon'ble Principal and other staff for their hospitality, support and invited them to visit our college at their convenience.

On the way back we took our lunch at "Aroti Hotel Badarpur", and thereafter we reached our college at 4p.m.

Yours faithfully

*Sima Sekha Das*  
HoD. Department of Bengali

Lala Rural College

Enclosers:

1. Resolution no. 01 of Departmental meeting Dated 01/02/2018
2. Notice no. 03 Dated 30 /01/2018
3. Programme schedule.
4. Signature sheet of the participants.
5. Photographs/videos
6. Statement of expenditure
7. Permission letter from Principal.





An Extract of Resolution No:-01 of the Departmental Meeting of Bengali ,dated 01-02-2018 with Dr Simarekha Das ,Head of the Department in the chair.

Resolution No:-01

The House dicussed about the meeting of conducting study tour of honours students in out side places of impotence .After having a serious discussion ,it is resolved to have a study tour of students under guidance of the two faculty members of the department namely Dr.Lakshmi Nath and Dr.Mayurakshi Nath on 27-02-2018 at Badarpur.

*Simarekha Das*  
(Dr.Simarekha Das)

Head , Department of Bengali

Lala Rural College,Lala.



Notice-01/2018  
Dept of Bengali, dated, 30.01.18.

All the honours students of Bengali department, Lala Rural College are hereby informed to attend the departmental meeting at 1. P.M. on 01-02-2018 to discuss about the upcoming one day educational tour in Kailash on -02.

Simanekha Das  
HOD, Dept of Bengali

Head  
Deptt. of Bengali  
Lala-Rural College, Lala

  
Co-ordinator  
Internal Quality Assurance Cell,  
Lala Rural College, Lala

ONE DAY EDUCATIONAL TOUR PROGRAMME AT BADARPUR, , 2017-2018

Programme Schedule

Date: 27/02/2018

Time Of Arrival at College:	8.30 a.m
The Journey will Start:	9.00 a.m
Arrival On Spot (I) SIDDESHWAR:	10.00 a.m
Breakfast:	10.30 a.m
Arrival on Spot (II):	
BADARPUR FORT	11.00a.m
Arrival on spot(III)	
N.C.COLLEGE,BADARPUR	11.30 a.m
Lunch Break:	1.00 to 1.30 a.m
Return to college:	3.00 p.m
Submission of the report on:	02.03.2018

  
Co-ordinator  
Internal Quality Assurance Cell,  
Lala Rural College, Lala



Session : 2017 - 18

Date : 27 - 02 - 2018

তারিখ 27-02-2018 ই; নামক রচয়িতা জনৈক  
ব্যক্তি বিবেচনা করা হইবে। - অন্য এক মন্তব্য  
সিদ্ধান্তমূলক প্রশ্নের উত্তরে উত্তর করা হইবে।  
আর এই উত্তরে, স্বাক্ষর উল্লেখ করার বিষয় হইবে।  
বস্তুসমূহ হইবে, সিদ্ধান্তের সন্ধি-প্রকার ও  
এন. সি. জনৈক হইবে - যেখানে হইবে।  
এক মন্তব্য বিবেচনায় সিদ্ধান্তমূলক প্রশ্নের  
উত্তর হইবে বিবেচনা - উল্লেখ হইবে ও সন্দেহ হইবে।  
উত্তরসমূহ - স্বাক্ষর - নিম্নলিখিত :-

১। সখী নাম।

২। সখী নাম।

৩। সখী নাম, স্বাক্ষর ২য় সাক্ষর

৪। সখী নাম, স্বাক্ষর ৩য় সাক্ষর

৫। সখী নাম, স্বাক্ষর ৪য় সাক্ষর

৬। সখী নাম, স্বাক্ষর ৫য় সাক্ষর

৭। সখী নাম, স্বাক্ষর ৬য় সাক্ষর

৮। সখী নাম, স্বাক্ষর ৭য় সাক্ষর

৯। Asad Ullah Majumder, 6th Exam.

১০। সখী নাম, স্বাক্ষর ২য় সাক্ষর

To,

The Principal

Lala Rural College, Lala, Hailakandi.

Sub: Statement of Income & Expenditure Details as incurred in one Day Educational Tour at Badarpur, & Thandapur, (Panchgram), Hailakandi for the session 2017-2018.

Respected Sir,

With reference to the subject above The Bengali Department of Lala Rural College Submitting the Expenditure Details of One Day Educational Tour which held on 27/02/2018 as under:

Nature of Expenditure	Quantity	Rate Per unit	Total Price
Bus Fare	01	2000/-	2000/-
Breakfast	11 packets	30.00/-	330/-
Lunch	11 plates	130/-	1430/-
banner	01 Piece	350/-	350/-
Misc		200/-	200/-
			Rs. 4310/- -

MOOD OF COLLECTION:

Students contribution : Rs 200× 08=	Rs 1600/-
From college Fund:	Rs 2000/-
From Departmental teachers contribution	Rs 710/-

This is for your kind approval and necessary action.

Yours Faithfully

*Simasrekha Das*  
HoD. Department of Bengali

Lala Rural College, Lala

*Beey*  
Coordinator  
Internal Quality Assurance Cell,  
Lala Rural College, Lala



# LALA RURAL COLLEGE

(Affiliated to Assam University a Central University)

LALA, HAILAKANDI

ASSAM-788163



## Contact Details

Phone No. : 03844-244238

e-mail : [principal@lrcollege.org](mailto:principal@lrcollege.org)

web : [www.lrcollege.org](http://www.lrcollege.org)

## TO WHOM IT MAY CONCERN

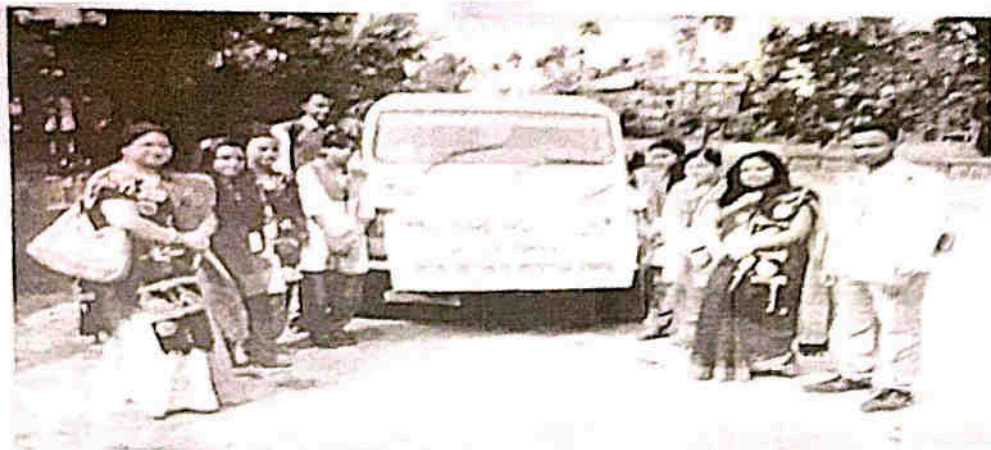
This is to certify that Dr. Lakshmi Nath and Dr. Mayurakshi Nath, Asstt. Professors in the Department of Bengali have successfully guided the students of the College to a one day educational tour to the places of historical interest in and around Badarpur as Professor- in- Charge. The Tour was funded by the College. The Tour was undertaken on 27/02/2018. Dr. Lakshmi Nath and Dr. Mayurakshi Nath are hard-working, dedicated, responsible and student-friendly and discharged their duties in full satisfaction of all concerned.

I wish them success in their life.

Principal I/C

Principal Incharge & Secretary  
LALA RURAL COLLEGE  
Lala, Hailakandi

Co-ordinator  
Internal Quality Assurance Cell,  
Lala Rural College, Lala



*Braj*  
Co-ordinator  
Rural Quality Assurance Cell,  
Lala Rural College, Lala





*Deep*  
Co-ordinator  
Internal Quality Assurance Cell,  
Lala Rural College, Lala



## REPORT ON ONE DAY EDUCATIONAL TOUR AT MUKAMKUTIR,


Ref no: Resolution no.02 of Departmental meeting Dated 12/01/2022.

Bengali Department of Lala Rural College had organized a One Day Education tour with 21 numbers of Honours students of TDC Classes. The tour was undertaken on 14/03/2022.

The reason of choosing Mukamkutir, Kaknchanpur part-1 was its proximity to Panchgram that had the second largest Paper Mill of Asia and has religious as well as social implications aknchanpur part-1. The journey was started from the college at 9 a.m with two faculty members of Bengali department namely Dr. Lakshmi Nath and Dr. Mayurakshi Nath as Prof-in-charge of this tour.

The team arrived the location at 10 a.m. The place is very significant from both religious and historical point of view. The surrounding people of the area are primarily belong to Muslim community and as such it is natural to have a Muslim shrine. But the existence of a temple speaks lots about harmoy . The place is a fine specimen of social integration as both a Muslim Shrine as well as a Shiva Temple stand by in the same vicinity since time immemorial. Lots of oral narratives that a burning flame can be witnessed on all occasions have been confirmed by this visit. It is said that on one side of the premises there is a Mukamkutir of Mirshah Pir and surprisingly the devotees of Lord Shiva come to pay homage on regular basis. The temple is also synonymous with Bhairab temple.

Since the most attractive feature of this place is its ever-burning fire, people irrespective of caste, creed and religion pay a visit to this place

  
Co-ordinator  
Internal Quality Assurance Cell,  
Lala Rural College, Lala

and it is our duty as well as responsibility to forward that holy tradition in the days to come.

The students were overwhelmed with this unique experience. On return journey at 2.p.m , members of the team had lunch at Hailakandi than arrived at the college premises at around 4.00 p.m. As part of the tour, students were asked to submit a write-up and accordingly the participants submitted their writings. On successful completion of the tour, the Department is enthusiastic to undertake such a tour in the coming academic year.


The Department expresses its gratefulness to all concerned for whom the educational tour has been a grand success.

Yours faithfully



HoD. Department of Bengali

Lala Rural College



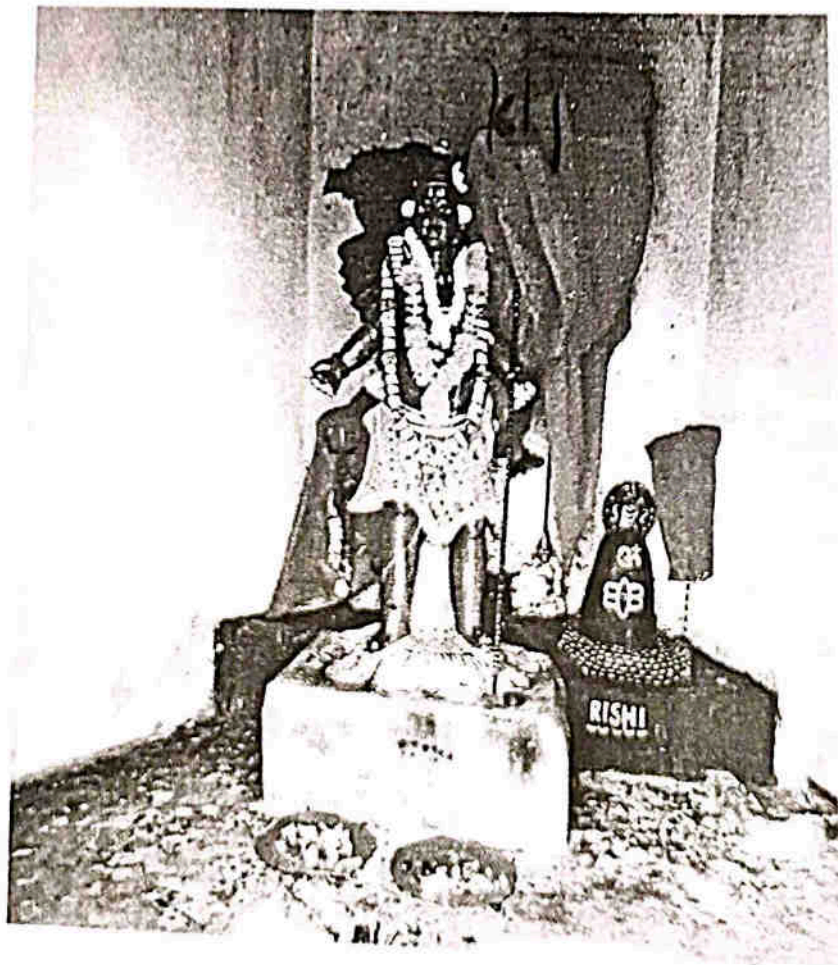
Co-ordinator  
Internal Quality Assurance Cell,  
Lala Rural College, Lala



One Day Educational Tour, Dept. of Bengali, 14<sup>th</sup> March, 2022



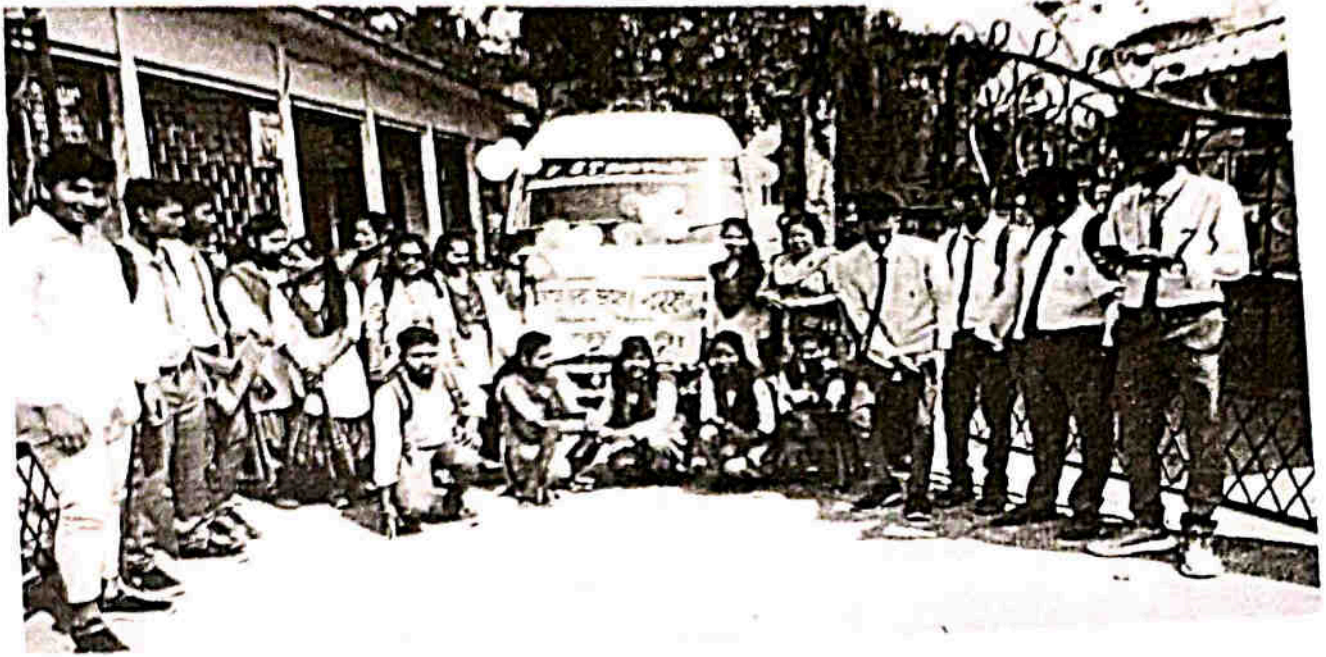
(1)



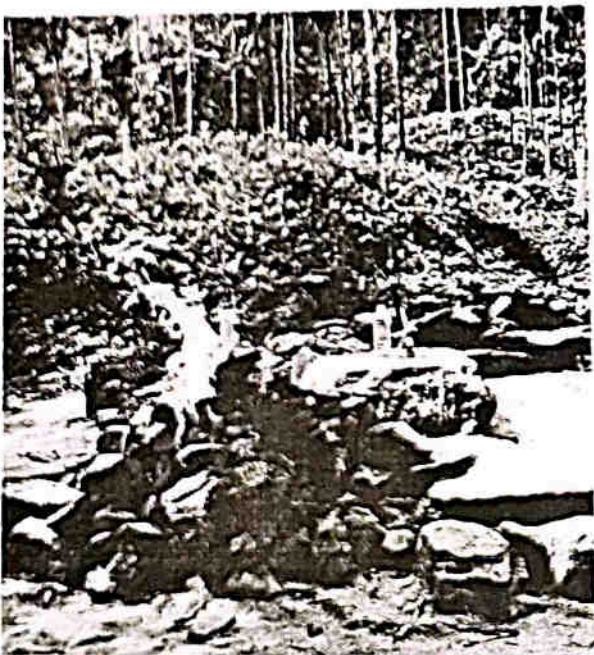
(2)

*Benaj*  
Coordinator  
Cell





(3)



(4)



(5)

*Beary*  
Co-ordinator  
Quality Assurance Cell,  
College, Lala



### **Report on educational tour conducted by the Department of History, 2020-21**

The Department of History in its meeting held on 8<sup>th</sup> March, 2021 resolved to conduct educational tour of the students of the department along with the faculty members. However, due to pandemic, the said tour could not be conducted in 2020-21. Hence, the department decided to conduct the tour on 12<sup>th</sup> March, 2022, at Badarpur Fort, Badarpur, Dist- Karimganj, Assam.

**Location-** Badarpur Fort is located on the northern bank of the river Barak at Badarpur in Karimganj district of Assam which is around 40 km. away from the college. The fort is located at crossroads of National Highway 44 and 58 which are at an arm's length from the Badarpur junction.

**Historical background-** The construction of the fort dates back to 18<sup>th</sup> century CE. The fort is popularly known as Historical Fort which is one of the rare historical monuments of southern Assam. It is the vintage fort built by Kachari kings to resist external invasions especially from the Mughals which is evident from the strategic location of the fort. The architectural design of the fort reveals typical Kachari style. The backside of the fort also resembles medieval Ahom style of architecture.

There were a total of twelve students and three faculty members, who went on tours on 12<sup>th</sup> March, 2022. Started from the college at 9.30, the group reached the spot at 11 AM. The students took note of the features of the fort and the teachers explained before the students about the historical significance of the fort.

The fort is situated a top of a small hill on the bank of the river Barak. The entrance gate is built in the typical Kachari and Ahom style with an arch constructed with bricks. The main door of the fort faces south direction which is also in the arch shape. There are four watch towers on the four corners of the fort

*Reddy*  
HOD, History

*Basu*  
Co-ordinator  
Quality Assurance Cell,  
1000, Lala

which also houses guardrooms. Canon holes are constructed all around the fort with a smaller dimension in the inside of the fort which might have been constructed for a better watch from inside. The entire construction of the fort is of burnt bricks. The fort spreads over a considerably reasonable area. However, the present state of the fort is in its ruins with a lack of conservation and maintenance.

.....

*Beeg*  
H.O.D. (History)

*Beeg*

Co-ordinator  
Internal Quality Assurance Cell,  
Lala Rural College, Lala



Some photographs of the educational tour are cited below:



*Beeg*  
HOD, History

*Beeg*  
Co-ordinator  
Internal Quality Assurance Cell,  
Lala Rural College, Lala

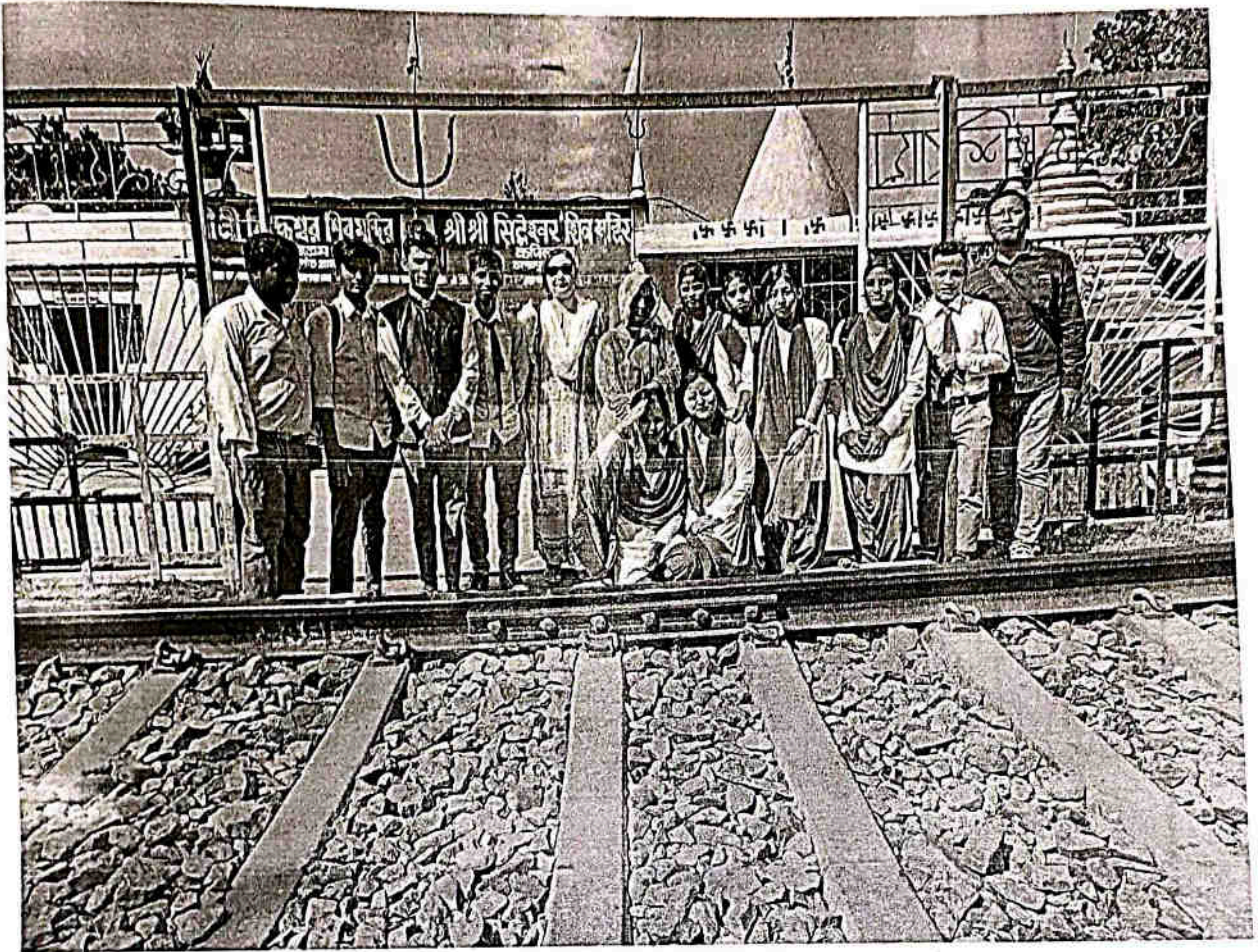




*Geeg*  
HOD, History

*Geeg*  
Co-ordinator  
Internal Quality Assurance Cell,  
Lala Rural College, L.R.

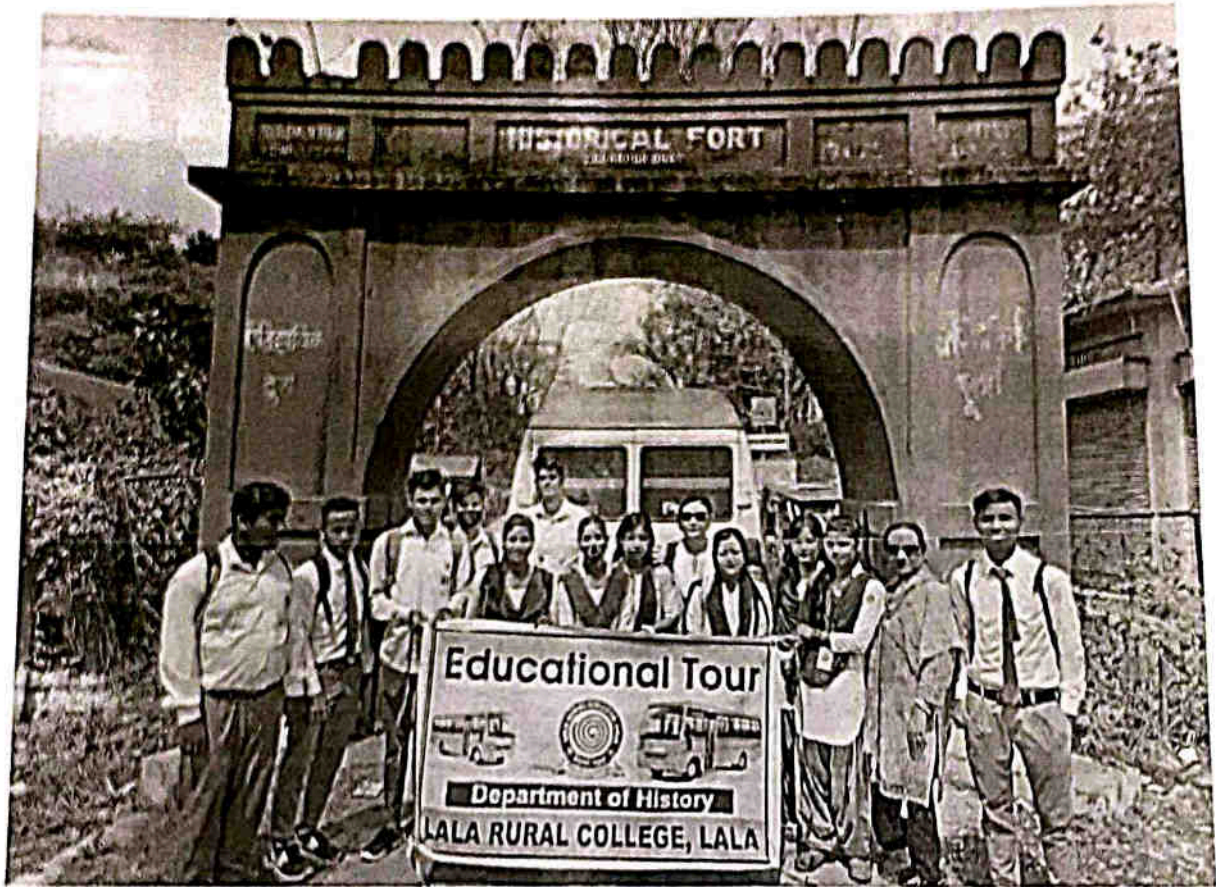




Beeg  
HOD, History

Beeg  
Co-ordinator  
Normal Quality Assurance Cell,  
Lala Rural College, Lala





*Beaj*  
HOD, History

*Beaj*  
Co-ordinator  
Internal Quality Assurance Cell,  
Lala Rural College, Lala



## REPORT ON A VISIT TO HANDLOOM INDUSTRY

DATED:29/04/2022

Department of Commerce had organized a one day visit on 26/04/2022 to the nearby Manipuri Handloom craft villages at Chengbil, under the township of Lala, for the TDC final semester students, in order to get the hands on knowledge about the "weaving, designing and dyeing components and tools used in the local made handloom products manufacturing process and the future prospects of this industry for the local youths".

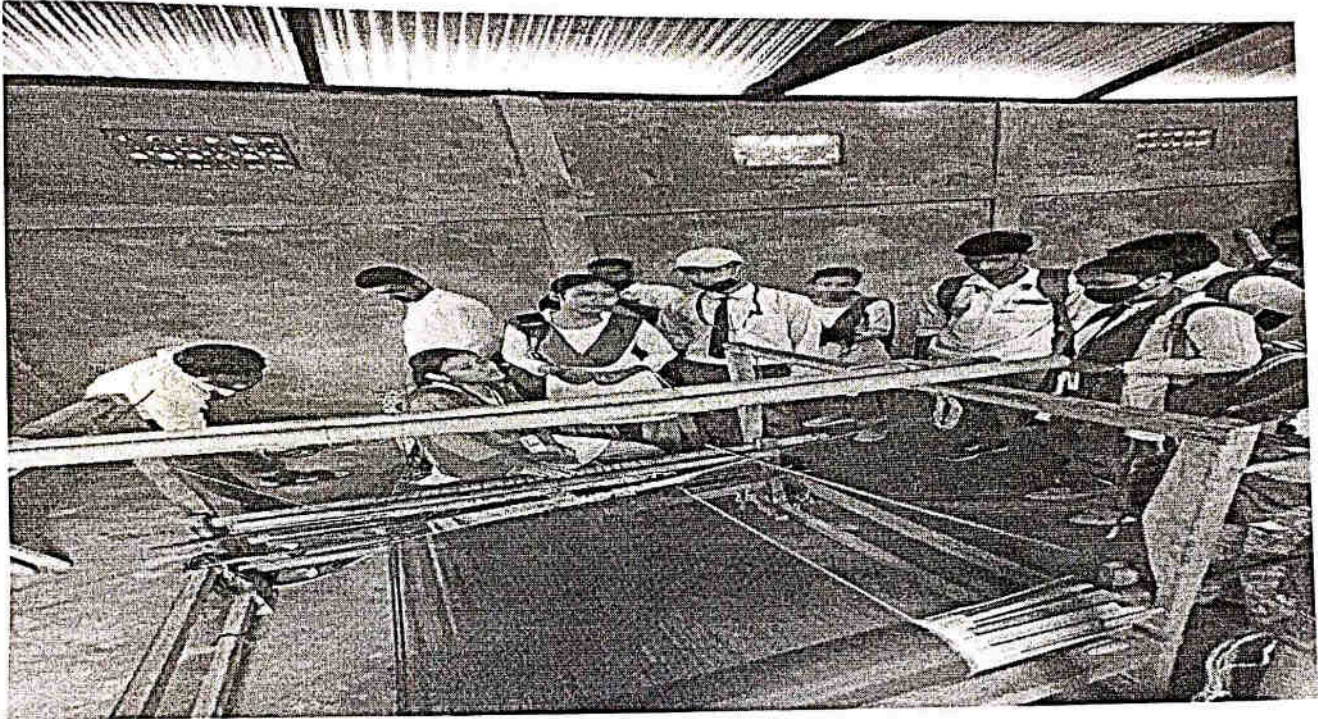


The journey started from the college premises at 10.30 am and a total number of 20 students were taken to the destination via Auto-Rickshaw accompanied by Dr. Sonali Roy, Mrs K. Dipika Singha and Mrs. Deepmala Paul, Assistant Professor, Department of Commerce. Under their supervision, students visited nearly all the entrepreneur's establishment situated at the locality of Chengbil area. It had been observed that it is a household handloom industry with decentralized set-up generating maximum of employment opportunities to the Manipuri Women community including young and older ladies. It had also been found out that the industry became an indispensable aspect of their socio-economic life of the local Manipuri community.


Generally two variety of bamboo machinery are used i.e. Yongkhan(eyong) which is used by assembling different parts such as Nachei, singmil, pangandem, sunna, Kommaba, samjet etc. to craft fabrics like fanek, fidup, lengjanfee, maket, khudei, taat, dalki, pangandem etc. However, Khwang fee (Tem, Pangandem, jepu, sanam,utang,sunna, nachee) is used to make different handloom clothes like fanek, lenhjan, hawfee, lairum fee etc.). It was a very informative and interesting trip as the students got the chance to interact with the local entrepreneurs and learned in detailed about the weaving techniques and process.


Co-ordinator  
Internal Quality Assurance Cell,  
Lala Rural College, Lala





Finally, we express our heartfelt gratitude to the Principal I/C, Dr. Tanuj Kumar Dey who permitted us to arrange the visit and hope that our department will arrange more such educational visit in future for the practical knowledge enhancement of the students.

Submitted by   
Dr. A. Keswarjeet Sharma **Head**  
**Dept. of Commerce**  
**Lala Rural College, Lala**  
HoD, Department of Commerce

  
Internal Quality Assurance Cell,  
Lala Rural College, Lala



## Report on Industrial Visit to Lalamukh Tea Estate

Ref:

- Resolution No. 01 of departmental Meeting dated 10-02-2021.

An Industrial Visit was organized by the Department of Commerce, Lala Rural College to 'Lalamukh Tea Estate'. The visit was scheduled on 15<sup>th</sup> February, 2021. The aim of the visit was to explore one of the oldest and technically advanced tea factories of Barak Valley, Assam, the 'Lalamukh Tea Factory'. Total of thirty five students and eight faculty members had joined the visit. We started from college premises around 10.30 a.m and reached the entrance gate of Lalamukh Tea Factory around 11:00 a.m. Mr. Amol Chandra Mal, Factory Clerk of the organization along with other departmental staff received us with a warm welcome. Firstly, he introduced us to Mr. Katyayani Kumar Singh, Factory Manager and gave us a formal introduction about the company and its basic process. After introduction, all students entered the tea manufacturing unit where they observed how transformation of freshly plucked green tea leaves to black tea takes place. The students learned the production process, layout design, distribution process and HR related practices implemented by lalamukh tea factory. Next, the factory manager explained the tea powder making process and varieties of tea produced in their factory. He also introduced us to the tea tasting process and motivated the students to join the tea industry by guiding them with the job opportunities available in the industry. After the visit to the factory, we headed to the organisation's office, where we met the commercial manager, Mr. Moti Lal Dhar. He gave us an overview on the history of the organization, its management, civilization of tea, history of lalamukh tea estate and its local culture, etc. The students thanked the management for the permission and support they gave to make our visit a grand success.

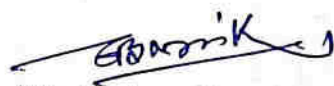
After the completion of visit to the factory and office, a light refreshment was provided to the students and few of the factory staff at 1.00 p.m. Next, we headed to the tea plantation area accompanied by Mr. Amol Chandra Mal, Factory Clerk. The procedures of tea plantation and harvest techniques were explained with great enthusiasm by the tea estate workers, who were working there at that time. On the way back from the plantation sight, we stopped at a tea garden spot around 2.00 p.m. to have our lunch. After completing our lunch, we visited one of the prominent spots of the estate i.e. the solar plant, accompanied by Mr. Katyayani Kumar Singh, Factory Manager and Mr. Jhontu Manna, Electrician. He guided us through out and explained the working of the plant i.e. electrical power generation, transmission and distribution. All the students expressed their thanks to Mr. Katyayani Kumar Singh and Mr. Jhontu Manna for sparing their valuable time. The visit came to an end at 4 p.m.

The visit enriched our knowledge and experience and also provided a great opportunity to learn practically through demonstration, interaction and exchange of information.

Encl:

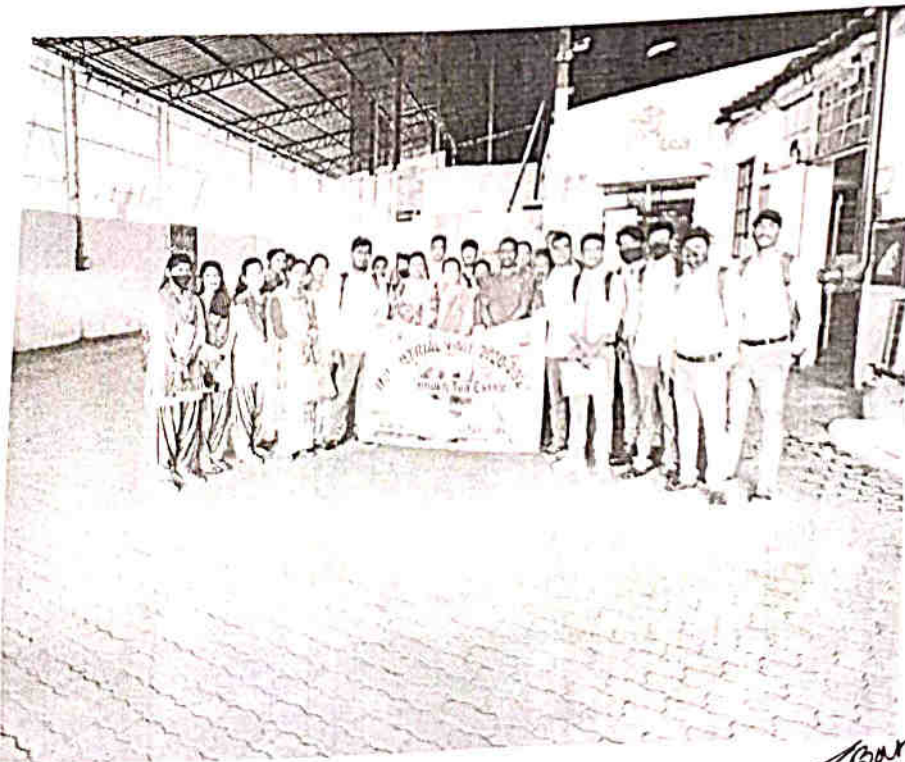
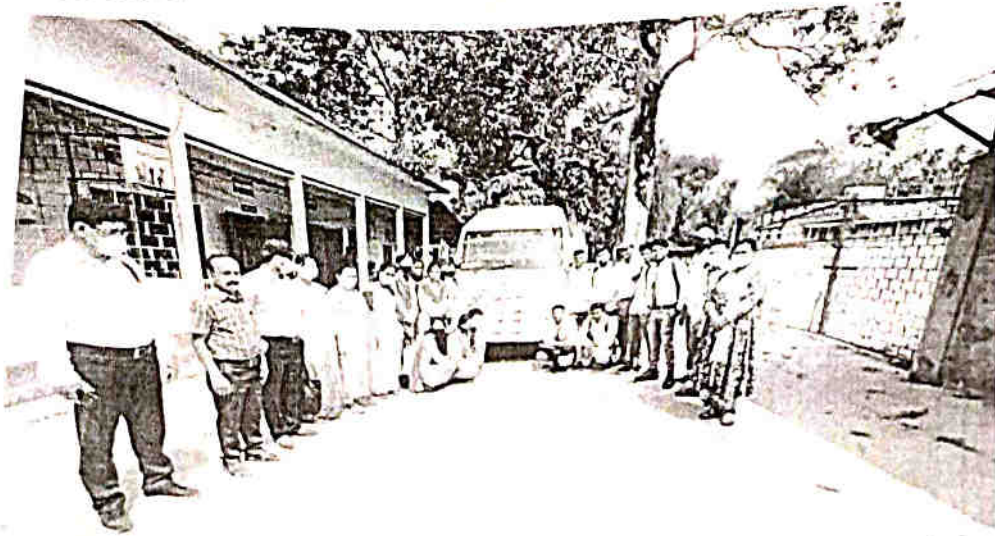
- Permission letter of the head of the institution.
- Photographs

  
Co-ordinator  
Internal Quality Assurance Cell,  
Lala Rural College, Lala

  
(Mr. Gautam Chandra Banik)  
HoD, Department of Commerce,  
Lala Rural College.



Photographs:



*Bacaj*

Co-ordinator  
National Quality Assurance Cell,  
Lala Rural College, Lala

*Gbarrik*

Head  
Dept. of Commerce  
Lala Rural College, Lala



*Beauj*  
Co-ordinator  
Formal Quality Assurance Cell,  
Lala Rural College, Lala

*Abdullah*  
Head  
Dept. of Commerce  
Lala Rural College, Lala

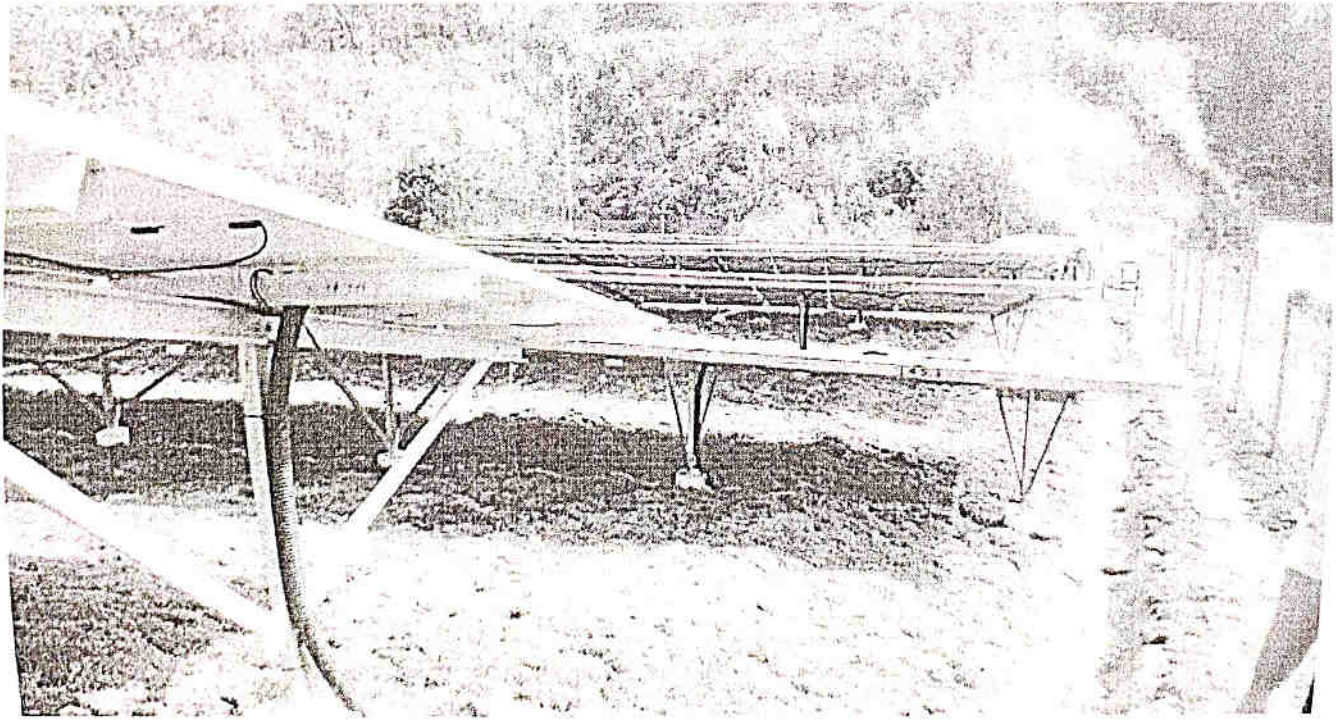
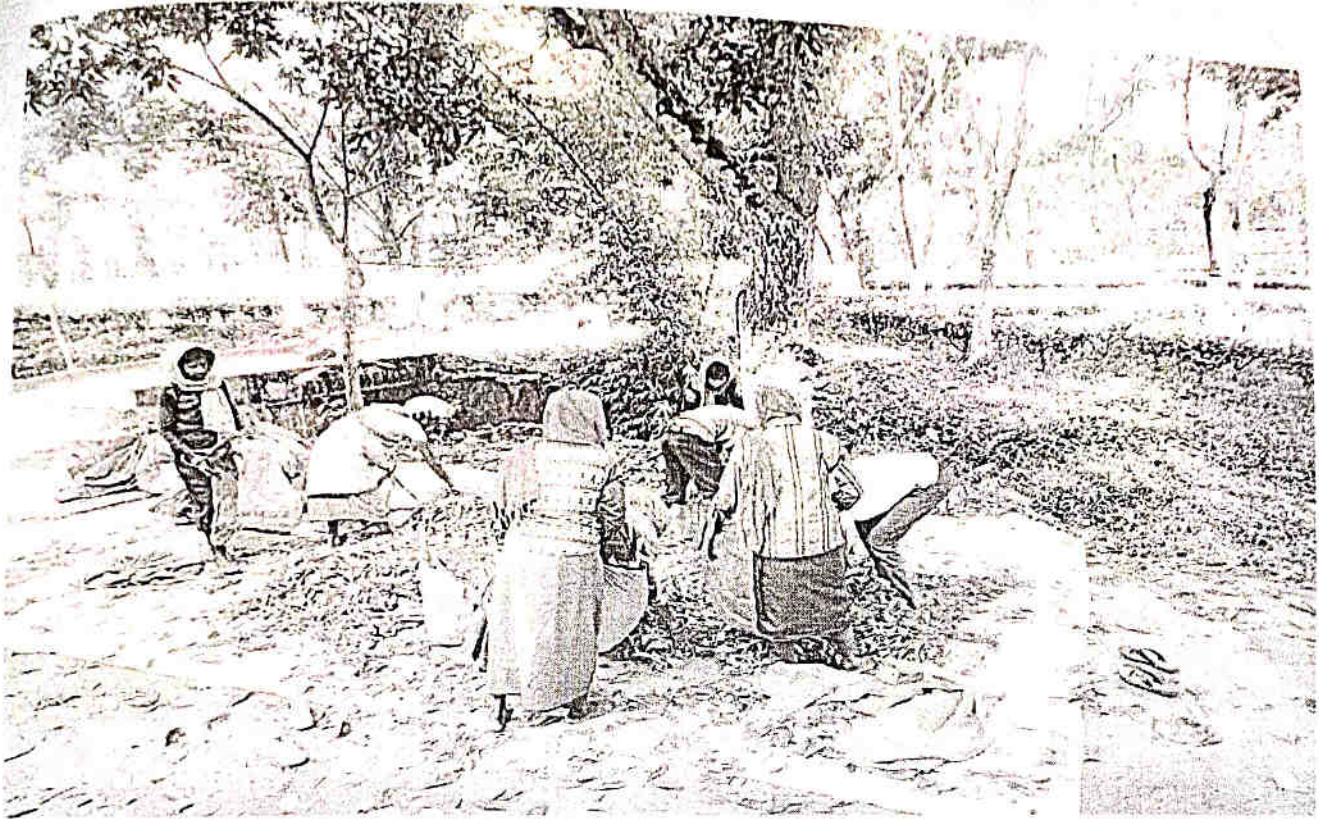




*Baraj*  
Co-ordinator  
Animal Quality Assurance Cell,  
Lala Rural College, Lala

*Barik*  
Head  
Dept. of Commerce  
Lala Rural College, Lala





*Geey*

Co-ordinator  
Small Quality Assurance Cell,  
Lala Rural College, Lala

*Aravind*

Head  
Dept. of Commerce  
Lala Rural College, Lala



# LALA RURAL COLLEGE

(Affiliated to Assam University & Central University)

LALA, HAILAKANDI

ASSAM-788163



## Contact Details

Phone No. : 03844-244238

e-mail : principal@lrcollege.org

web : www.lrcollege.org

### To Whom It May Concern

This is to certify that the Department of Commerce, Lala Rural College is going to organise a one day Industrial Visit to Lalamukh Tea State, Hailakandi on 15<sup>th</sup> February, 2021 for the final year students of the department and for the same permission is granted. I wish them all the success for the tour and hope that it will be a productive one.

Principal I/c  
Lala Rural College,  
Lala, Hailakandi  
Principal I/c  
Lala Rural College  
Lala Hailakandi

Co-ordinator  
Internal Quality Assurance Cell,  
Lala Rural College, Lala


**REPORT OF EDUCATIONAL TOUR, DEPARTMENT OF ECONOMICS ,LALA RURAL COLLEGE ,LALA**


Ref. No.—Resolution no.2 of Departmental Meeting dated 20/01/2021

On 25/01/2021 the department of economics along with 09 students of Economics department went for an Educational Tour in Koyah Tea Estate. In the joint meeting of faculty, students of Economics department dated 20/01/2021( Resolution no.01) was fixed for Tour in Koyah Tea Estate . Accordingly on that day at 11am our journey has been started along with students and the faculty members of department from college campus by bus with the venter of the department of Economics. The Tour team has reached in the tea estate by 11.45 am . As soon as our bus has been reached to the destination one managerial person has received us as a prior information was given from the authority of our college about our visit in the tea estate.

The managerial person has led the tour team to reach the inner part of the factory where the manufacturing process is done. By pointing out every machine installed inside the factory the concern authority has explained the functions of each part of machine to prepare the tea from the raw tea leaf. The managerial person informed that ,near about 600 workers are working to perform the various works to prepare the tea starting from collecting of mature tea leaf from the tea garden up- to pocketing of the tea powder for the final consumers . Our students have listened very anxiously the explanation the managerial person has done about the different parts of machines and the function of each machine. At the end of demonstration the students have cleared their quires on the production, pocketing and marketing of the tea leaf from the managerial person. After that among students, faculty members and the managerial person a discussion has been done taking the reference of topic from the syllabus related to the process of production and the application in practice. They have come to know a lot, starting from gathering of tea leaf from tea garden up to the final stage of the tea leaf i.e. pocketing and marketing. In an Overall observation the tour was very successful and fruitful on the part of students

On the way back of the tea estate a light refreshment has been offered for the tour team.The journey has been ended to come back to the college campus again at 2pm.

  
Co-ordinator  
Internal Quality Assurance Cell,  
Lala Rural College, Lala

  
Dr. Manindra Singha  
HOD, Department of Economics,  
Lala Rural College, Lala



NOTICE -04/ECO/LRC

20/01/2021

It is for general information of TDC students of Economics department that, the department is going to organize following programs as per given schedule:

1. Departmental Magazine: students of the Economics department directed to write the articles on current topics of Economics and submit the write-ups within 20<sup>th</sup> Feb.2021 for publishing Departmental Magazine.
2. (i) Educational Tour (Kayah Tea Estate), on 25/01/2021.  
(ii) Market Survey and Community Extension Program on 30/01/2021.  
Students of the Economics department, interested to go for Tour and Survey are directed to communicate with the HOD by 23/01/2021.
3. Departmental Quiz and Seminar: A Quiz competition and Class Seminar will be held on 27/01/2021 at 11am onwards, students are directed to remain present in Hall No.17 at 10.30am.

  
Co-ordinator  
Internal Quality Assurance Cell,  
Lala Rural College, Lala

(HOD)  
Dr. Manindra Singha,  
Deptt. Of Economics,  
Lala Rural College


One Day Educational Tour Programme at Kayah Tea Estate, Monacherra

Programme Schedule

Date-25/01/2021

Time of arrival at college : at 10.30am  
The journey will start : at 11.00am  
Arrival in Estate : at 12.00 pm  
Survey of Estate : 12pm onwards  
Refreshment on the way back of tea Estate: 1.30pm  
Return to college : 2.30pm

Submission of the report on 27/01/2021



Co-ordinator  
Internal Quality Assurance Cell,  
Lala Rural College, Lala

( Dr.Manindra Singha)  
HOD, department of Economics  
Lala Rural College, Lala



To

The Principal,  
Lala Rural College, Lala

Sub: Statement of Income & Expenditure in connection with Educational Tour organized by the department of Economics on 25<sup>th</sup> January 2021, Lala Rural College, Lala.

Sir,

With reference to the subject cited above I have honour to submit herewith the details of expenditure incurred and income received in connection with the said tour.

Details of Expenditure incurred	
Items	Expenditure
1. Bus charge	1500.00
2. Vanner	300.00
3. <u>Refreshment</u>	<u>500.00</u>
	Total---2100.00

Contributed by the department

Balance amount Rs NIL

This is for your kind information and necessary action

Yours Faithfully

  
Co-ordinator  
Internal Quality Assurance Cell,  
Lala Rural College, Lala

(Dr. Manindra Singha)  
HOD, department of Economics  
Lala Rural College, Lala

REPORT OF THE MARKET SURVEY DONE BY DEPARTMENT OF ECONOMICS,  
ON 12/03/2020, LALA RURAL COLLEGE, LALA.

On 12<sup>th</sup> March, 2020 a market survey was done by the department of Economics, Lala Rural College. A team consisting of 10 students of T.D.C. Even Semesters surveyed three daily markets of local area of Lala town. They started their journey at 12pm from the college, by Rikshaw led by the departmental teacher Mrs. Anuradha Saha. The objective of the survey was to study the prospects of vegetable cultivating in the local area of Lala.

The survey team had taken 06 small vendors of vegetables as the respondents from each market from the survey it was found that all the respondents. The respondents informed that, the vegetables they were selling, a portion of these were coming from outside of the district e.g. Meghalaya, Barpeta, Carbedia etc. and the local farmers were also supplying a portion of demand created by the consumers everyday in the market coming from local areas of Krishnapur, Lalamukh, Niamathpur, Rajesharpur etc. situated at near distance from the Lala town. All most all the respondents told that, the demand for local vegetables are more than the vegetables come from outside of the district. The consumers remained ready to purchase the local items with a little high price than the vegetables coming from outside.


So from the observation it was found that, the local farmers have bright opportunity to produce at a large scale and sale in the local markets.

**Community Extension Programme:**

To motivate the small vendors for adaptation of Cashless Transactions. The students made aware about the facilities of Cash Less Transactions. They described thoroughly regarding the reduction of business risks, cost, transaction speed, elimination of high denomination notes etc.

Overall the survey was fruitful as the students learnt much more from the survey on that day with the mode of enjoyment.

  
Coordinator  
Rural Quality Assurance Cell,  
Lala Rural College, Lala

  
H O.D. Economics  
( Dr. Manindra Singh )  
HoD, Department of Economics  
Lala Rural College, Lala



Statement of the expenditure

To,

The Principal,  
Lala Rural College, Lala

Sub: Statement of Income & Expenditure in connection with the Market Survey done by the department of Economics, Lala Rural College, Lala, on 12th March 2020

Sir,

With reference to the subject cited above I have honor to submit herewith the details of expenditure incurred and income received in connection with the said tour.

Details of Expenditure incurred


Items	Expenditure
1. Rikshaw charge	500.00
2. Vanner	300.00
3. <u>Refreshment</u>	<u>500.00</u>
Total---	1300.00

Contributed by the department

Balance amount Rs Nil

This is for your kind information and necessary action

Yours Faithfully

  
(Dr. Manjota Singh)  
HoD, Department of Economics  
Lala Rural College, Lala

  
Co-ordinator  
Internal Quality Assurance Cell,  
Lala Rural College, Lala


Market Survey done by department of Economics, Lala Rural College, Lala


Programme Schedule

Date: 12/03/2020

Time of arrival at college	:	at 10.30 am
The journey will start	:	at 12.00pm
Survey of markets	:	at 12.10 pm onwards
Refreshment	:	3.20pm
Return to college	:	4.00pm

Submission of the report on 13/03/2020

  
(Dr. Manindra Singha)  
HoD, Department of Economics  
Lala Rural College, Lala

  
Co-ordinator  
Internal Quality Assurance Cell,  
Lala Rural College, Lala



The extract of Resolutions of the department of Economics Meeting, dated 06/03/2020 with Dr. Manindra Singha in chair.

Resolution no. 02

It is resolved in the meeting that, a Market Survey and Community Extension Programme in daily market of vegetable will be organized on 12/03/2020 by the students of Economics department.

Resolution no. 03

It is resolved in the meeting that the department will publish the Departmental Magazine of the session 2019-2020, for this students will be asked to submit their writes-up on burning topics on Economics within ten days from the date of notice.



Dr. Manindra Singha  
HOD, Department of Economics,  
Lala Rural College, Lala



Co-ordinator  
Internal Quality Assurance Cell,  
Lala Rural College, Lala

NOTICE-06/Eco/2020

05/03/2020

It is for general information of T.D.C. Even Semesters students of Economics department that, the department is going to organize following programmes as per given schedule,

1. Market Survey and Community Extension Programme (To Daily Markets of vegetables at Lala town on 12/03/2020)

Students willing to participate in the Market Survey and Community extension Programme are directed to entry their names to the department on or the date.

2. Departmental Magazine

Department will publish the departmental Magazine of session 2019-2020. Students of Economics department are directed to write articles on burning topics of Economics and submit their writes -up on or before 16/03/2020.



(Dr. Manindra Singha)

HOD, Department of Economics,  
Lala Rural College, Lala



Co-ordinator  
Internal Quality Assurance Cell,  
Lala Rural College, Lala




REPORT OF THE MARKET SURVEY DONE BY DEPARTMENT OF ECONOMICS ,ON 30<sup>th</sup> January  
2021 ,LALA RURAL COLLEGE LALA.

On 30<sup>th</sup> January, 2021 a market survey was done by the students of Economics department .On that day a team of 10 students with the leadership of the departmental teachers surveyed local daily vegetable markets. They took the interview by preparing some questionnaires of the small vegetable vendors selling vegetable in the daily markets. The objective of the survey was, to study the contribution of small vendors of vegetable selling vegetables towards their family. The team surveyed the three markets by taking 07 small vendors as the respondents. The team started their journey at 12noon by E- Rickshaw from the college and surveyed.

From the observation it was found that the age group of the respondents was from 20 years to 60 years. All of them were selling all the vegetables which grow in season as well as which remain available through out all months of the year. Nearly 80 percent of the respondents said that, they were doing that business from 15 to 20 years and selling vegetables were the only way of their earning .Ninety percent of the respondents said that they have their own house, only ten percent said that they have not their own house and they were living in rented room. All most all the respondents said that, they had the family with five to six members in the family. Some of them had made marriage of their daughters. All most all respondents' children were taking education in primary or upper primary level. When the students wanted to know about future plan, whether the respondents have any plan to shift their business to any other, all most all of them replayed that, they are very happy with this profession and they have no plan to change that business.

Community Extension Programme:

On the day of Market Survey the department has also organized for a Community Extension Programme in the market they visited for survey. The programme was prepared on the theme of "opportunity of education" . To base on the theme the team has tried to motivate the small vendors for giving education to their children. The team has also enlightened the vendors about the

  
Co-ordinator  
Internal Quality Assurance Cell,  
Lala Rural College, Lala

opportunities from education their children can get ,as education helps to build character and they will able to create a link with the society as well as with the economy. With a few words the team has explained how education helps to empower individuals to utilize their potential to be a good citizen as well as can get better job. The team has discussed about the various vocational courses which may help to get suitable job and above all through the courses how their children can become self-employed.



Dr. Manindra Singha  
HOD Department Of Economics ,  
Lala Rural College,Lala



Statement of the expenditure

To,

The Principal,  
Lala Rural College, Lala

Sub: Statement of Income & Expenditure in connection with the Market Survey done by the department of Economics, Lala Rural College, Lala, on 30<sup>th</sup> January 2021

Sir,

With reference to the subject cited above I have honor to submit herewith the details of expenditure incurred and income received in connection with the said tour.

Details of Expenditure incurred

Items	Expenditure
1. Rikshaw charge	500.00
2. Vanner	300.00
3. <u>Refreshment</u>	<u>500.00</u>
Total---	1300.00

Contributed by the department

Balance amount Rs 00

This is for your kind information and necessary action

Yours Faithfully



(Dr. Manindra Singha)

Head of the Department, Economics

Lala Rural College, Lala.

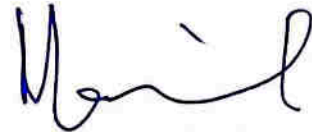


Co-ordinator  
Internal Quality Assurance Cell,  
Lala Rural College, Lala

Programme Schedule

Date: 30/01/2021

Time of arrival at college : at 10.30am  
The journey will start : at 12.00pm  
Surveyed markets : at 12.10onwards  
Refreshment on the way back of tea Estate : 3.30pm  
Return to college : 4.00pm  
Submission of the report on 01/02/2021



(Dr. Manindra Singha)  
HOD, Department of Economics,  
Lala Rural College, Lala



The extract of Resolutions of the department of Economics Meeting, dated 06/03/2020 with Dr. Manindra Singha in chair.

Resolution no. 02

It is resolved in the meeting that, a Market Survey and Community Extension Programme in daily market of vegetable will be organized on 12/03/2020 by the students of Economics department.

Resolution no. 03

It is resolved in the meeting that the department will publish the Departmental Magazine of the session 2019-2020, for this students will be asked to submit their writes-up on burning topics on Economics within ten days from the date of notice.



Dr. Manindra Singha  
HOD, Department of Economics,  
Lala Rural College, Lala



Co-ordinator  
Internal Quality Assurance Cell,  
Lala Rural College, Lala

Economics  
20-21

The department of Economics organ-  
-ised a Market Survey on 12/03/2020, Thurs-  
-day. ~~Invited~~ ~~three~~ with some students  
of T.D.C and one teacher of the department  
the team surveyed daily markets at  
Lala, they surveyed a total three numb-  
-ers of local markets situated at diff-  
-erent sides of Lala Town.

The participants of Market  
Survey are, —

- ① Panchael Das (6th sem)
2. Sudipta Basik - (6th sem)
3. Sayal Karmakar (6th sem)
4. Moryda Debnath (2nd sem)
5. Anil Ghosh (6th sem)
6. Noor Mohd Hazari (6th sem)
7. K. Sangita Singha (4th sem)
8. Simu Roy (2nd sem)
9. Nurul Haq Hazari (2nd sem)
10. ~~Abir~~ Anish Ree (2nd sem)



The Department of Economics has done a Community Extension Programme on the same day (12/03/2020). By motivating the small vendors selling vegetables in the market they surveyed.

The participants of Community Extension Programmes are,

1. Sudipta Barik (6th sem)
2. Panchali Das (6th sem)
3. Sajal Karmakar (6th sem)
4. Mongola Debnath (2nd sem)
5. Amul Ghosh (6th sem)
6. Nour Mohal Hazari (6th sem)
7. K. Sangita Singha (4th sem)
8. Simu Roy (2nd sem)
9. Nurul Haq Hazari (2nd sem)
10. Abinash Lee (2nd sem)

NOTICE -04/ECO/LRC

20/01/2021

It is for general information of TDC students of Economics department that, the department is going to organize following programs as per given schedule:

1. Departmental Magazine: students of the Economics department directed to write the articles on current topics of Economics and submit the write-ups within 20<sup>th</sup> Feb.2021 for publishing Departmental Magazine.

2. (i) Educational Tour (Kayah Tea Estate), on 25/01/2021.  
(ii) Market Survey and Community Extension Program on 30/01/2021.

Students of the Economics department, interested to go for Tour and Survey are directed to communicate with the HOD by 23/01/2021.

3. Departmental Quiz and Seminar: A Quiz competition and Class Seminar will be held on 27/01/2021 at 11am onwards, students are directed to remain present in Hall No.17 at 10.30am.



(HOD)

Dr. Manindra Singha,  
Deptt. Of Economics,  
Lala Rural College

  
Coordinator  
Internal Quality Assurance Cell,  
Lala Rural College, Lala



## Report on an educational excursion to Tripura from 30th December 2017 to 3<sup>rd</sup> January 2018

1. **Introduction:** The Northeast region is a unique part of India that is designed with diverse linguistics, and cultural and religious threads, held together into a composite national identity by a rich history of cultural evolution. Tripura is a hilly state in the Northeast region, bordered on three sides by Bangladesh and on one side by Assam and Mizoram. This state is home to a mixture of diverse tribal cultures and religious communities. On January 26, 1950, Tripura was accorded the status of 'C' Category state and on 1<sup>st</sup> November 1956, it was recognized as a union territory. With the sanctioned effort and struggle of the people of Tripura, it gained full statehood on 21<sup>st</sup> January 1972 as per the Northeast Reorganization Act, 1971.
2. **Objectives:**  
Objectives of educational excursion:
  - a) To promote learning through outdoor interaction and practical experiences and knowledge.
  - b) To make the students familiar with the geographical location, structure, and natural heritage of Tripura.
  - c) To inculcate a sense of appreciation for the wonders of Tripura, a land of natural beauty and historical diversity.
  - d) To acknowledge the life of people in Tripura.
  - e) To encourage the students to develop the value of togetherness, the ability of leadership, and mutual love and co-operation.
3. **Role of educational excursion :**
  - a) During educational excursions, students are excited and energized;
  - b) During transportation, students come across various new places;
  - c) Excursions open up endless possibilities to understand the outer world;
  - d) In order to know and learn something new, the students don't have to depend on a structured curriculum.
  - e) An educational excursion is based on an interest-driven approach to improve overall learning through practical experiences and knowledge.

### Schedule of educational excursion:

Date	Day	Time	Activity/event
30/12/2017	Day 1	6.20 am 7.30 pm 8.30 pm	Started from Lala Railway Station to Agartala Reached Agartala railway station Stepped in Saheed Bhagat Singh Youth Hostel
31/12/2017	Day 2	7.00 am 11.30 am 2.00 pm 3.00 pm 5.00 pm 7.00 pm 8.45 pm	The journey started for Chabimura Reached chabimura Lunch Started further journey from Chabimura to Mata Tripureswari Temple, Udaipur Reached Tripureswari Temple, Udaipur Return journey from Udaipur Reached Saheed Bhagat Singh Youth Hostel, Agartala
1/1/2018	Day 3	8.00 am 9.30 am 12.00 pm 12.30 pm 1.30 pm 3.30 pm 4.30 pm 6.00 pm 6.30 pm	Moved for Neermahal, Melaghar Reached Melaghar Lunch in Melaghar Started journey for Sepahijala zoological park Reached sepahijala zoological park Moved towards kamalasagar Reached Kamala Sagar The journey started for Arkaneer, NGO in Sekerkut (west). Reached Arkaneer

Co-ordinator  
Internal Quality Assurance Cell,  
Lala Rural College, Lala

		8.30 pm	Come back to Saheed Bhagat Singh Youth Hostel
2/1/2018	Day 4	8.30 am	<u>Tour in Agartala city</u> <ul style="list-style-type: none"> <li>• Gedu Mia mosque, Agartala</li> <li>• Maharaja Bir Bikram College, Agartala</li> <li>• Ramakrishna Mission</li> <li>• Ujjayanta Palace Museum</li> <li>• Heritage Park</li> <li>• Agartala Secretariat Building</li> <li>• Indo-Bangla Border( Akhaura Border)</li> <li>• Jagannath Temple</li> <li>• Purbasha (Tripura Handloom Centre)</li> <li>• Back to Saheed Bhagat Singh Youth Hostel</li> </ul>
		8.30 pm	
3/1/2018	Day 5	5.00 am	Started journey for Kumarghat by train
		5.30 am	Reached Agartala railway Station
		8.30 am	Reached Kumarghat railway Station
		9.00 am	Started the journey from Kumarghat to Unakoti by car
		10.00 am	Reached Unakoti
		12.00 pm	Moved towards Dharmanagar
		1.00 pm	Reached Dharmanagar and had lunch
		2.15 pm	The journey from Dharmanagar to Katakhal by train
		6.30 pm	Reached Katakhal and started back journey to Lala by bus
		8.00 pm	Reached Lala safely

### A detailed report on an excursion to Tripura

#### Day 1- Departure 30/12/2017

The excited students of the final semester of Lala Rural College gathered at Lala Railway Station at 6.20 am. The teachers in charge of this educational excursion were Dr. L.Chirokumar Singha, Head, Deptt of Political Science, and Dr. Lakshmi Nath, Assistant professor, Deptt of Bengali. These two teachers along with 14 (fourteen) students started the journey from Lala at 7 am and reached Agartala, the capital of Tripura on the same day at 8 pm. Their lodging and flooding were arranged in Saheed Bhagat Singh Youth Hostel. Their local guide was Prof. G.C. Banik, Head, Deptt of Commerce, Lala Rural College.

#### Day 2- 31/12/2017

##### 1. Chabimura:

Chabimura also known as chakvrakma or chakrakma is famous for its panels of rocks carving on steep mountain walls on the bank of the Gomoti River. There are huge carved images of Shiva, Vishnu, Kartika, Durga, and other gods and goddesses.

##### 2. Tripureswari temple, Udaipur

Locating around 55km away from Agartala, Tripureswari temple in Udaipur is one of the 51 sati peeths existing in India. The temple was constructed by the then Maharaja Dhanya Manikya in 1501 AD. On the eastern side of the temple, there is the "Kalyan Sagar" lake where fishes and tortoises of huge sizes are found and visitors feed them with puffed rice. The temple consists of a square-type sanctum of the typical Bengali hut structure with a conical dome.

#### Day 3-01/01/2018

1. Neermahal, Melaghar Popularly known as the lake palace of Tripura, Neermahal palace is the living witness of Tripura's past glory. The antique architectural design, lush green lawn, and

Co-ordinator  
Internal Quality Assurance Cell,  
Lala Rural College, Lala



royal decoration are attracting a large number of visitors. Located in the middle of Rudrasagar Lake, the palace was constructed by Maharaja Bir Bikram Kishore Manikya.

2. Sepahijala Zoological Park:

This zoological park is home to hundreds of wild animals such as tigers, leopards, monkeys, migratory birds, and especially monkeys with specs in their eyes. The park also features an artificial lake where boating can be experienced while exploring and surrounding natural beauty.

3. Kamalasagar:

Kamalasagar Kali temple was built on a hilltop by Maharaja Dhanya Manikya in the late 15<sup>th</sup> century. It is located just beside Bangladesh Border in a village named Kosba. It is 27 km away from Agartala. The lake Kamalasagar in front of this temple enhances its beauty.

4. Arkaneer:

It is a non-government organization playing a pivotal role in social development contributing to various aspects like the environment, children, and senior citizens, and also they generated awareness for self-employment.

**Day 4- 02/01/2018 (Tour in Agartala city)**

1. Gedu Mia Mosque

The Gedu Mia mosque is one of the most famous mosques in Northeast India. The congruence of various Indo-Islamic architectural styles in this mosque is an attraction the visitors. Gedu Mia got the contract for constructing an airport in Agartala from the last princely ruler of Agartala Maharaja Bir Bikram Kishore Manikya in 1942. A portion of the profits was used to construct this fine-looking mosque that uses imported white marble in its exteriors.

2. Maharaja Bir Bikram College, Agartala

Maharaja Bir Bikram College or MBB College is a degree college in Agartala imparting general education in science, commerce, and humanities. Established in 1947, it is the oldest college in Tripura with a campus spread over 264 acres. The motto of the college is "Vidyamrtamasnute" (Knowledge is the key to immortality). The founder of the college is Maharani Kanchan Prabha Devi named after Maharaja Bir Bikram Manikya.

3. Ramakrishna Mission, Dhaleswar, Agartala

The Ramakrishna Mission, Dhaleswar in Agartala was a sub-centered under Viveknagar Ashrama, Agartala which was started in 1996. It has been made a full pledge grant center in July, 2020. The activities of Dhaleswar center are:

- a) An allopathic cum Homeopathic dispensary;
- b) A student's home for boys;
- c) Religious activities;
- d) Welfare works through distributing blankets and clothes to needy people.

4. Ujjayanta Palace:

Locating in Agartala, the palace is a significant mark of Tripura's historical glory. The huge palace was constructed by King Kishore Manikya around the end of the 19<sup>th</sup> century. The whole palace is built in a unique Greek form of architectural design featuring three high domes. The inside museum of this palace is another point of attraction to the visitors.

5. Heritage Park:

Located in the middle of Agartala, Heritage Park represents the amazing scenario of Tripura's tribal tradition and culture. Heritage Park is truly a brief picturization of Tripura's legacy and culture. Besides, portraying the miniature version of Tripura's prominent heritage locations, the part also gives a picturesque view of green scenery.

6. Agartala Secretariat Building:

The new Agartala Secretariat Building is situated in Khejurbagan in Tripura. The architectural design of the complex as well as the surrounding beauty of the building is truly fascinating.

 - Cell



7. Indo-Bangla Border(Akhaura Border):  
Tripura is a border state in Northeast India and Agartala lies on the fringes of the country. Akhaura Border divides India and Bangladesh. It is the border location where international trade takes place boosting the economy of both countries. The border also serves as a legal entry to and from Bangladesh. A routine border parade is an attraction to tourists.
8. Jagannath Temple:  
Jagannath Temple is a prominent religious place in Agartala built during the 19<sup>th</sup> century, the Jagannath temple is dedicated to Lord Jagannath, Balaram and Subhadhra. The temple is said to be constructed by the king of the Manikya Dynasty.
9. Purbasha (Tripura Handloom Centre):  
Each tribe of Tripura is famous for its special handicrafts, handloom, cane, and bamboo are the oldest industries in Tripura. Purbasha Tripura Govt. handloom center is a top player in the category of handicraft item dealers. This well-known establishment acts as a one-stop destination serving customers within and outside the state.

**Day 5- 03/01/2018**

1. Unakoti  
Situated around 178 km away from Agartala, Unakoti is one of the prime tourist places in Tripura known as the center of pilgrimage, unakoti is home to numerous historical and Religious sculptures. Made out of rocks, the sculptures here speak about Hindu mythology. From Unakoti, this excursion group started the return journey. And reached Lala safely on 3/1/2018 at 8.00 pm.

**Importance of this educational excursion to Tripura**

1. This excursion has imparted education through practical individual experiences.
2. The students have visited various places of historical importance which will help them to know about the historical facts of Tripura.
3. They have become familiar with the language, culture, customs, and food habits of the tribal people in Tripura which was usually unknown to the students of Lala Rural College.
4. This educational tour in the group has developed a sense of togetherness, co-operation, and fellow feeling among the students as in this group, students of different communities were included. Moreover, a very close relationship has been developed between the teachers and students while going through the entire excursion.
5. The fact is that it is very difficult for some students to afford personal visits in such far-off lands. But such an excursion is affordable for each student and our students have also got the opportunity to visit Tripura through excursion.

The government of Assam sanctioned Rs. 1, 00,000(one lakh only) for this excursion. And this excursion has become possible due to this financial support from the govt. Overall, this educational excursion was a memorable event both for the students and teachers.

**Encl:** Notice of the Lala Rural College in the selection of participants for the excursion program to Tripura.

Signature of the Teacher in-charge

1. Dr. L. Chiro Kumar Singha(HoD, Political Science)

2. Dr. Lakshmi Nath (Assistant Professor)

*Dr. Lakshmi Nath*  
Co-ordinator  
Internal Quality Assurance Cell,  
Lala Rural College, Lala



NOTICE NO.112  
DATE 27/11/2017

It is informed to all concerned that the following students have been selected to participate in the EXCURSION programme as per the terms laid down in the Notice No. 103 Dated 10/11/2017.

ARTS STREAM

1. Samir Singha
2. Shruti Singha
3. K. Surbi Singha
4. Uttara Das
5. Zakaria Hassan Barbhuiya
6. Moniruz Zaman Laskar
7. Mahmaz Parbin Mazumder
8. Sotalsi Paul
9. Srigdha Nath

COMMERCE STREAM

1. Santay Baroi
2. Ng. Amarjit Singha
3. Prithvi Das
4. Subhas Ch. Nath
5. Sumit Das

The concern students are asked to meet Dr. Chiro Kr. Singha, HoD., Political Science immediately on 29.11.2017 at 1 pm positively to observe other necessary official formalities.

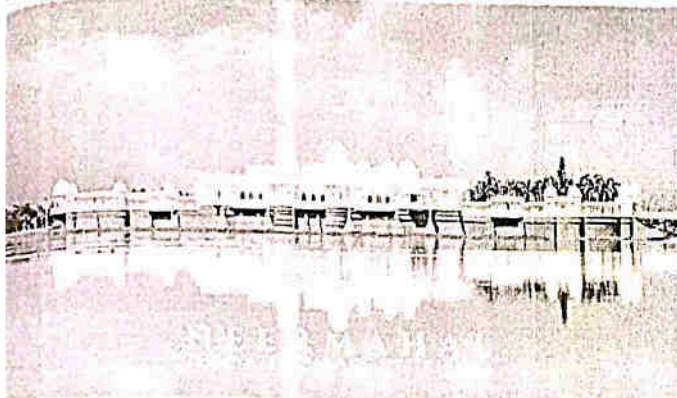
Principal of  
Lala Rural College,  
Lala, Haridwar

Principal-in-Charge

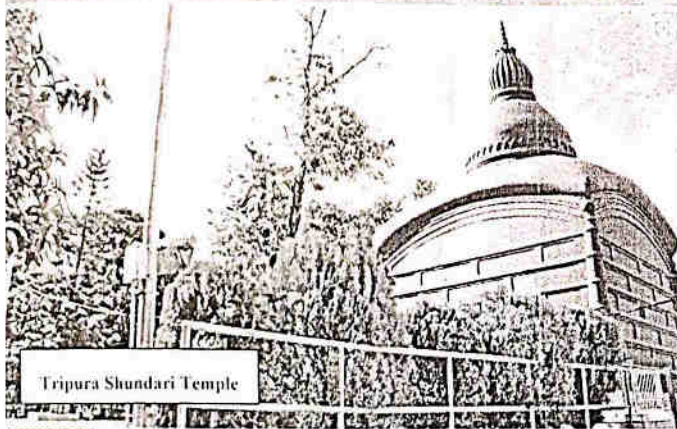
Co-ordinator  
Internal Quality Assurance Cell,  
Lala Rural College, Lala



# Photo Gallery



Ujjayanta Palace



Tripura Shundari Temple



Heritage Park



Ujjayanta Palace



Neer Mahal Palace

EXCURSION  
SESSION-2016-2017  
LALA RURAL COLLEGE, LALA  
MAILAKANDI, ASSAM

01-01-2018 12:21

*Beaj*  
Co-ordinator  
Internal Quality Assurance Cell,  
Lala Rural College, Lala





Lata Railway Station

03-01-2018 05:47



Sepahijala Zoological Park



Dimura



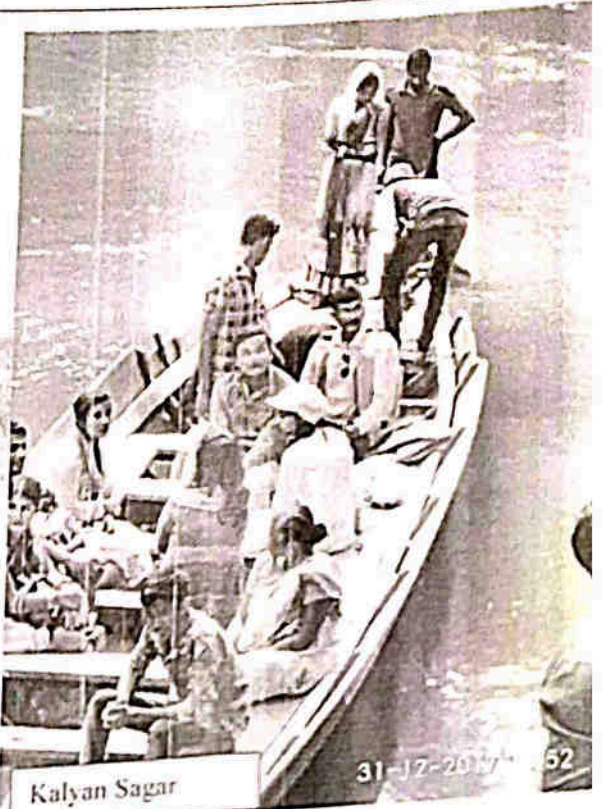
UNAKOTI

Co-ordinator  
In-charge Quality Assurance Cell,  
Lata Rural College, Lata





Saheed Bhagat Singh Youth Hostel



Kalyan Sagar

31-12-2017 52



Chabimura

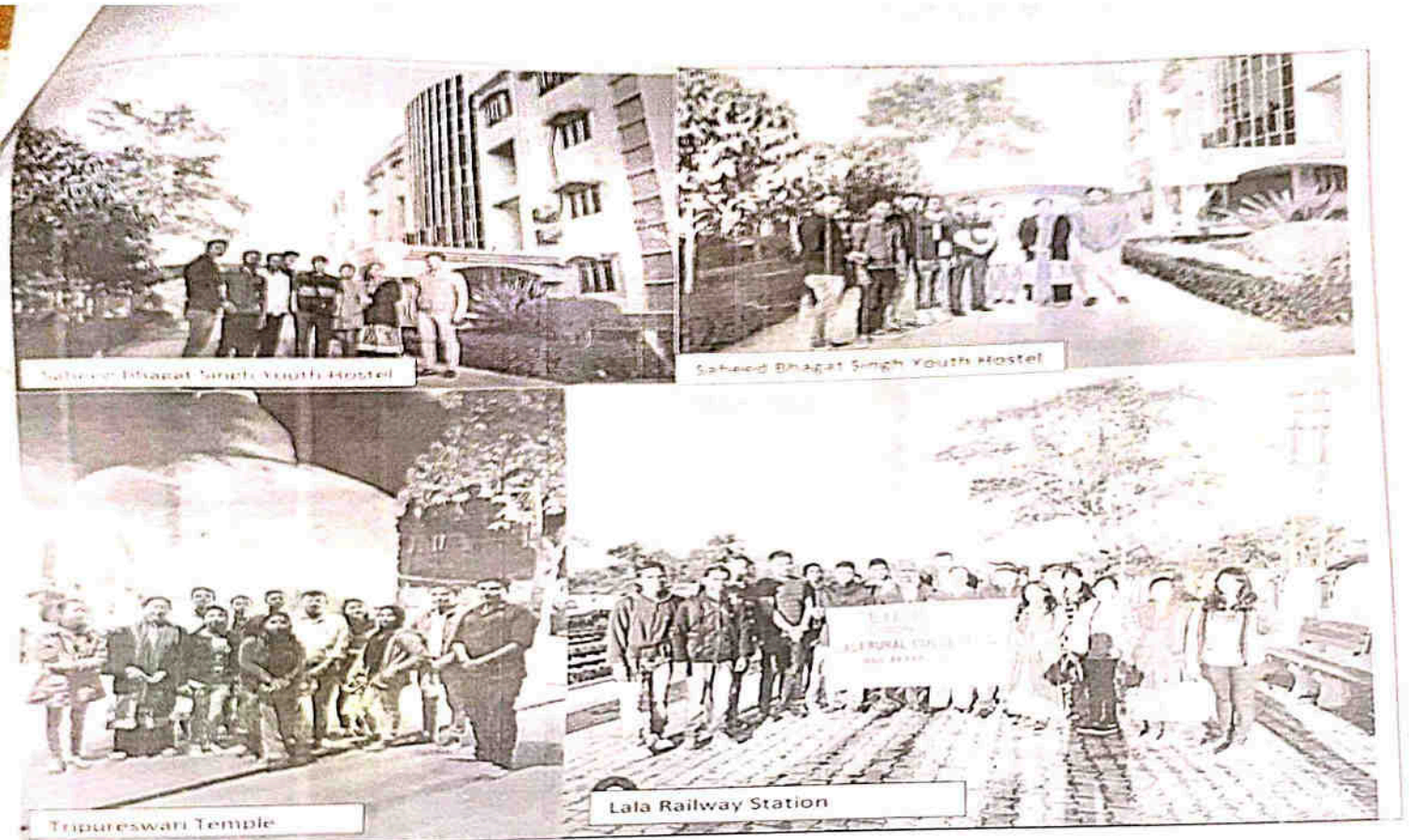


Tripureswa

31-12-2017 16:50

Co-ordinator  
Community Assurance Cell,  
College, Lala





Sahied Bhagat Singh Youth Hostel

Sahied Bhagat Singh Youth Hostel

Tripureswari Temple

Lala Railway Station

Submitted by Professors in charge

Dr. L. Chiro Kumar Singha (HoD, Department of Political Science)  
 &  
 Dr. Lakshmi Nath (Assistant Professor, Department of Bengali)

*[Handwritten signature]*

1. Chiro Kumar Singha  
 2. Lakshmi Nath

*[Handwritten signature]*  
 Insurance Cell,  
 College, Lala

**A detailed report on an excursion to Jaipur 2020 under 'Ek Bharat Shrestha Bharat'**

Lala Rural College arranged an excursion with students of Final Semester in Jaipur, Capital city of Rajasthan from 30/01/2020 to 07/02/2020. The excursion was possible because of a grant from the Govt. of Assam disbursed through the Director of Higher Education, Assam. The Director of Higher Education categorically mentioned Rajasthan as venue of Excursion under the Scheme Ek Bharat Shrestha Bharat..


The initiative of EkBharat Shrestha Bharat was announced by honourable Prime Minister on 31<sup>ST</sup> October 2015 on the occasion of the 140<sup>th</sup> birth anniversary of Sardar Vallabhai Patel. Through this innovative measure, the knowledge of the culture, traditions and practices of different states and union territories will lead to an enhanced understanding and bonding between the states, thereby strengthening the unity and integrity of India.

Ek Bharat ShreshthaBharat programme aims to enhance interaction and promote mutual understanding between people of different states/UTs through the concept of state/UT pairing. The states carry out activities to promote a sustained and structured cultural connect in the areas of language learning, culture, tradition and music, tourism and cuisine, sports and sharing of best practices, etc.

The broad objectives of EK BHARAT SHRESTHA BHARAT are:

1. to celebrate the Unity in Diversity and to maintain strengthen the fabric of traditionally existing emotional bonds between the people of our country
2. to promote of the spirit of national integration through a deep and structured engagements between all Indian states and Union Territories through a year-long planned engagement between States
3. to showcase the rich heritage and culture, customs and traditions of either State for enabling people to understand and appreciate the diversity that is INDIA, thus fostering a sense of common identity.
4. to establish long –term engagements and,
5. to create an environment which promotes learning between states by sharing best practices and experiences.

Vision of the Scheme has been:

  
Beneficiary for  
and Quality Assurance Cell,  
Lala



1. To celebrate the idea of India as a nation wherein different cultural units across varied geographies coalesce and interact with each other, this glorious manifestation of diverse languages, cuisine, music, dance, theatre, movies and films, handicrafts, sports, literature, festivals, painting, sculpture etc will enable people to imbibe the innate cord of binding and brotherhood.
2. To make our people aware about the seamless integral hull of the Modern Indian State spread across a vast landmass on whose firm foundations, the geo-political strength of the country is ensured to benefit one and all.
3. To impress upon people at large about the increasing inter-connectedness between the constituents of various cultures and traditions, which is so vital for the spirit of nation building.
4. To ease out the feeling of 'stranger in a strange land' among the people of different states, cultures and traditions living in various states of India.
5. To introduce a sense of responsibility and ownership for the nation as a whole through these close cross-cultural interactions as it intends to build up the inter-dependence matrix unequivocally.
6. To celebrate the diversity as well as unity of the Nation at the same time.
7. To generate the vibrance of understanding and appreciation amongst the people and forge mutual bonding to securing an enriched value system of unity in the nation.

With these objectives in mind, the college formed a six member Excursion Committee with the following members:

1. Principal : Chairman
2. Dr. L.ChiroKumar Singha: Member
3. MsAnuradhaDe: member
4. Dr. Manas Sinha: member
5. Dr. Lakshmi Nath: member
6. Prof.Gautam.C.Banik: member

The committee after several round of meetings, finalised the modalities of the tour and selected Dr. TanujkumarDey, Associate Professor of the Dept. of English and Dr. Lakshmi Nath, Assistant Professor of the Dept. of Bengali as Professors-in-charge. Accordingly, the journey commenced on 30<sup>th</sup> January 2020.

Most of the selected students had no knowledge of traveling beyond the border of Barak Valley, as such when the team arrived in Delhi after a 50 hours train journey, most of the participants became tired and exhausted, and they required a day of rest. So the day was engaged for exploring some famous monuments of Delhi that includes among others, the KutubMinar, India Gate, Rajghat and the Red Fort. It was a memorable day for the members of the team since they physically witnessed what they had so long heard or saw in television.

  
Quality Assurance Cell,  
Lala Boral College, Lala

The students became so much enthusiastic that their tiredness suddenly vanished and they had no problem of undertaking another journey to Jaipur on the same night. The team arrived Jaipur at the wee hour when the famous Pink City was still in slumber. After a brief stay at the hotel, the team visited some famous monuments/historical sites that include Amer Fort, Jantar Mantar, Hawa Mahal, City Centre, Jal Mahal or Water Palace, Albert Hall, City Palace and some industry where local textiles are produced.

### A detailed report on an excursion to Rajasthan

#### Day 1

#### Departure 30/01/2020

All the members of the Excursion team gathered at the premises along with their guardians and by 5 p.m they proceeded to Badarpur, nearest railway station for upward journey to New Delhi. The two teachers along with 10 (ten) students formed the team.

#### Day 2

#### 31/01/2020

1. The train arrived Guwahati, the capital of Assam at 6 in the morning. The entire day was spent on rail and students enjoyed the scenery. For most of the members, it was the longest journey ever undertaken by them. However, the joy and excitement of seeing the unseen, knowing the unknown and exploring the unexplored kept them ever warm.

#### Day 3-

#### 01/02/2020

Finally the train arrived Anand Vihar of Delhi, the Capital of India sharp at 7.25 pm. The joy of being in the Capital knew no bounds. Since it was a journey over 48 hours, and all members were tired and exhausted, all had an early dinner and went to bed by 10 pm as it was decided to spend a day in Delhi to remove the exhaustion. It was decided to visit some of the important and historical monuments in Delhi.

#### Day 4

#### 02/01/2018

Sight-seeing in Delhi that includes

1. Kutub Minar
2. India Gate
3. Rajghat
4. Red Fort

#### Qutub Minar

This impressive structure has removed all traces of exhaustion caused by the long train journey. This towering 73 metres high structure is one of the most popular places to see in Delhi. It is a UNESCO World Heritage Site, presenting a glimpse into the grandeur of the past. Built in 1192, it is considered to be the first building, marking the arrival of Muslim rulers. Surrounded by an appealing garden,

  
Co-ordinator  
Internal Quality Assurance Cell,  
Lala Lajpat Rai College, Lala



QutubMinar creates a sight worth remembering. Tourists all over the world come here admiring the imposing figure of the minaret. Students had the unique opportunity to meet some people of different parts of the world. Built in the style of Indo- Islamic Afgan architecture, QutubMinar is built with red sandstone. Its height is 72.5 metres and there are 379 steps to reach its top. The minaret is 47 feet wide at the base while at the top it is around 9 feet. It consists of five towers.

The joy of travel comes in exploring new things. Planting one's feet somewhere one has never been before brings with it the joy of discovery and the joy of pushing back on the boundaries of one's very own world.

#### **India Gate**

The India Gate is a war memorial. It stands as a memorial to 84,000 soldiers of the British Indian Army who died between 1914 and 1921. Following the Bangladesh Liberation War in 1972, a structure consisting of a black marble plinth with a reversed rifle, capped by a war helmet and bounded by four eternal flames, was built beneath the archway. This structure, called Amar JawanJyoti has since 1971 served as Indis's tomb of the unknownsoldier. India Gate is counted amongst the largest war memorials in India.

#### **Rajghat**

Rajghat is the cremation site of Gandhiji, most revered and remembered as the Father of the Nation. The mortal remains of Gandhiji were cremated at this ghat on 31<sup>st</sup> January following his assassination. The structure of the Samadhi reflects simplicity. The last words of Mahatma Gandhi, 'Hey Ram' are inscribed on the memorial platform, which is flanked by an eternal flame. Visiting dignitaries plant trees in the designated place. People of every class visit the memorial to pay their homage to this great soul whom they fondly call 'Bapu'.

#### **Red Fort**

The Red Fort is a historic fort in the Old Delhi that historically served as the main residence of the Mughal Emperors. Emperor Shah Jahan commissioned construction of the RF on 12<sup>th</sup> May 1638, when he decided to shift his capital from Agra to Delhi. Originally red and white, its design is credited to Ustad Ahmad Lahori who also constructed the TajMahal. It was designated a UNESCO World Heritage Site in 2007.. On 15 August 1947, the first prime minister of India raised the Indian Flag above the Lahori Gate. Every year on India's Independence Day, the prime minister hoists the Indian tri colour flag at the fort's main gate and delivers a nationally broadcast speech from its ramparts.

#### **Day -5**

**03-02-2020**

The team covered the journey from Delhi to Jaipur overnight and arrived Jaipur at 12.30 am. After a comfortable stay at hotel, they went out for sightseeing at 8 in the morning..

1. Jeep Safari to Amer Fort
2. JaalMahal
3. City Centre
4. JantarMantar
5. Hawaimahal
6. Albert Hall

#### **Amer Fort**

It was built in 1592 by Raja Man Singh. It was located in Amer, Rajasthan which is a part of Jaipur by extension. The Fort stands out for its Hindu characteristics in terms of architecture and design and closely resembles a grand temple. The relevance of Amer Fort as one of many historical monuments in Jaipur stems from the fact that it was long considered the stronghold

  
Co-ordinator  
Internal Quality Assurance Cell,  
Lala Rural College, Lala

of the Rajput Maharajas, Rajasthan's longest reigning royal family. This is a UNESCO Heritage Site.

#### **JalMahal**

The JalMahal or water palace is situated in the middle of the Man Sagar Lake of Jaipur City. The location of this palace sets it apart from any other historical structure in the city. The interiors of this palace are not open to the public but the pathway outside is a popular place to take pictures and enjoy the view.

#### **City Centre**

Visit to city center has been a unique one. Students could see how clothes are dyed with raw vegetables. Ethnic dress is another significant item. Market places are crowded with leather products, rejai (blanket) and various items of home decoration. Both teachers and students were found busy in purchasing the ethnic items.

#### **JantarMantar**

Jaipur has its very own JantarMantar. It is one of the most famous monuments of Jaipur. It is an equinoctial sun dial and is one of five structures in India: all built by Maharaja Jai Singh II between 1724 and 1735. located at Kanwar Nagar, these JantarMantars were built to tabulate astronomical tables and tract the sun, the moon and planetary movement. It is itself a wonder.

#### **HawaMahal**

The palace of the winds or HawaMahal was built by Maharaja SawaiPratap Singh for royal women to view the busy streets of Johari Bazar while staying veiled behind the Jharokhas. It was completed in 1799 and constructed with pink and red sandstone. The exteriors of this palace stand out for the fact that it closely resembles the honeycomb of a bee hive with 953 "jharokhas" or small windows that are nicely accentuated with exquisite lattice work. During day time, its chambers get illuminated with varied colours as the sunlight streams in through its many coloured glass work windows.

#### **Albert Hall**

It is both a museum and a monument of historical importance. It was opened to the public in 1887. It has the distinction of having its foundation stone laid by King Edward II. It is an impressive structure and has a rich collection of artefacts, paintings, sculptures, crystal works and metal works.

Day -6  
04-02-2020

  
Co-ordinator  
Internal Quality Assurance Cell,  
Lala Rural College, Lala



On way back to Delhi, it was decided to visit FatehpurSikri on Jaipur – Deli Road. Night was spent in the vicinity of FatehpurSikri. Located at a distance of 40 km from Agra and built during the second half o the 16<sup>th</sup> century by the Emperor Akbar, FatehpurSikri was the capital of the Mughal Empire for only some 10 years. It is essentially a fortified city It was awarded the status of UNESCO World Heritage Site in 1986. It is home to JodhaBai's Palace, Jama Masjid, BulandDarwaja. Akbar built the grand city in a barren land, a land known for lack of water, for one simple reason. He intended to show his reverence for the Sufi saint Salim Christi. Salim lived in the desert, so Akbar built his city in the desert. When Christi passed away, Akbar constructed the center piece of FatehpurSikri, the Tomb of Salim Christi. The Sufi holy man's tomb has remained a place of pilgrimage for Muslims. The ancient structures stand impressive: Diwan-i-Aam, Diwan –i-khas, ibadatKhana, panch MAHAL, tomb of Salim Christi, jama Masjid, Bulanddarwaja, Birbal's house, DaftarKhana, Pachisi Court, Khwabgah and so many. The structure tell stories even today.

**Day -7**

**05-02-2020**

Early in the morning the team left for Delhi and spent a few hours in Agra to watch the famous TajMahal. It is an ivory-white marble mausoleum on the right bank of the river Yamuna. It was commissioned in 1631 by Shah Jahan, the fifth Mughal Empire to house the tomb of his favoutite wife, MuntazMahal. It also houses the tomb of the emperor himself. The tomb is the centerpiece of a 17 hectre complex which includes a mosque and a guest house. The TajMahal complex is believed to have beeb completed in its entirety in 1653. The project work employed some 20,000 artisans under the guidance of UstadAmjadLahori, the emperor's court architect. It attracts more than 6 million visitors a year, designated as a UNESCO World Heritage Site in 1983 and it was declared a winner of the New 7 Wonders of the World.

With this Wonder, the team arrived Delhi at 7 PM, boardedRajdhani Express at 7.30 pm

**Day -8**

**06-02-2020**

Whole day spent on train. The only discussion students could initiate was all about the tour they had just undertaken

**Day -9**

**07-02-2020**

Arrived Badarpur at 9 am

Arrived Lala at 10.30 am

### **Importance of this educational excursion to Rajasthan**

1. Though the excursion was aimed in Rajasthan, students could avail some extra exposure to some outstanding places. This is because the team had to travel Rajasthan through those places. This includes visit to Delhi, Agra and FatehpurSikri.
2. The students gathered practical taste of travel and adventure.
3. They had experienced the vastness of India, its rich diversity, culture, tradition and custom of the people, their way of life. This understanding is the need of the hour. Meeting people of other countries and interacting with them was a life time feeling. It has been a moment of pride being an Indian when people of other countries appreciate our country for its rich cultual tradition, heritage, and unique historical structures.
4. Visit to each of the places is itself a rewarding experience. Students had no words to express their sense of wonder, joy, bewilderment and above all, the reality they are exposed to.

  
Co-ordinator  
Quality Assurance Cell,




5. They have become, to some extent, familiar with the language, culture, customs, and food habits of different people they encountered in different situations.
6. They have successfully spent so many hours only on travel from one extreme part of the country and had witnessed so many states. Such a long continuous journey for days together and their thirst of travel and knowledge is praiseworthy.
7. The students have all through co-operated with teachers, had been found responsible and accountable for their action. The educational tour in group has initiated a sense of togetherness, co-operation, and fellow feeling among them as members of a group, though they belonged to different communities in their personal life. Moreover, a very close bonding had developed over the tour that is expected to retain throughout their life.
8. At the personal level, it may not be possible to visit such places with some definite objects in mind. Some of the students may not even afford to undertake such visits to such far-off lands.
9. The excursion will surely make the students ponder deeply to seek reasons or the drawbacks, if any, why we fail to draw more tourists though our state Assam has so many things to showcase to the outside world like some national parks sheltering one-horned rhinoceros and so many rare flora and fauna, the lush greenery, places like Haflong for its earthly paradise, tea gardens, the largest river island, the second largest wetland, numerous tribes and their rich unique traditions, the ancient historical monuments scattered throughout the state and so on. Government should initiate process so that more tourists come to this land and it will provide economic incentives to the local youths as well.

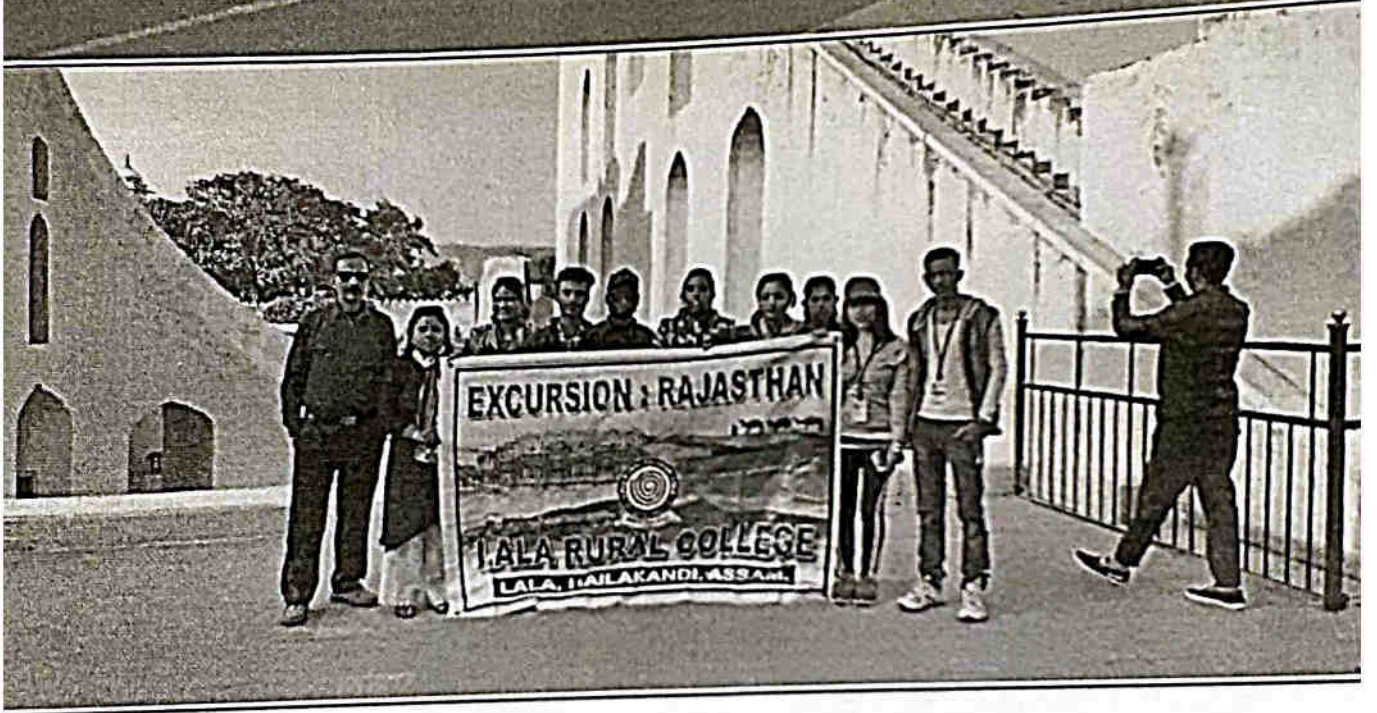
The excursion will encourage other students to be more dedicated to their studies so that they could find a place in the excursion to be conducted in the coming days. At the same time, through such programme, the knowledge of the culture, traditions and practices of different states and union territories will surely lead to an enhanced understanding and bonding between the states, thereby strengthening the unity and integrity of India.


Since Ek Bharat Shrestha Bharat programme aims to enhance interaction and promote mutual understanding between people of different states/UTs through the concept of state/UT pairing, this visit to Rajasthan will not only gain a student at the personal level, it will have a deep imprint in their minds when they compare the work culture, dedication, sincerity of those people with us, and this enlarged vision will have a direct impact in our society in the coming days. The states carry out activities to promote a sustained and structured cultural connect in the areas of language learning, culture, tradition and music, tourism and cuisine, sports and sharing of best practices, etc.

### Photo gallery

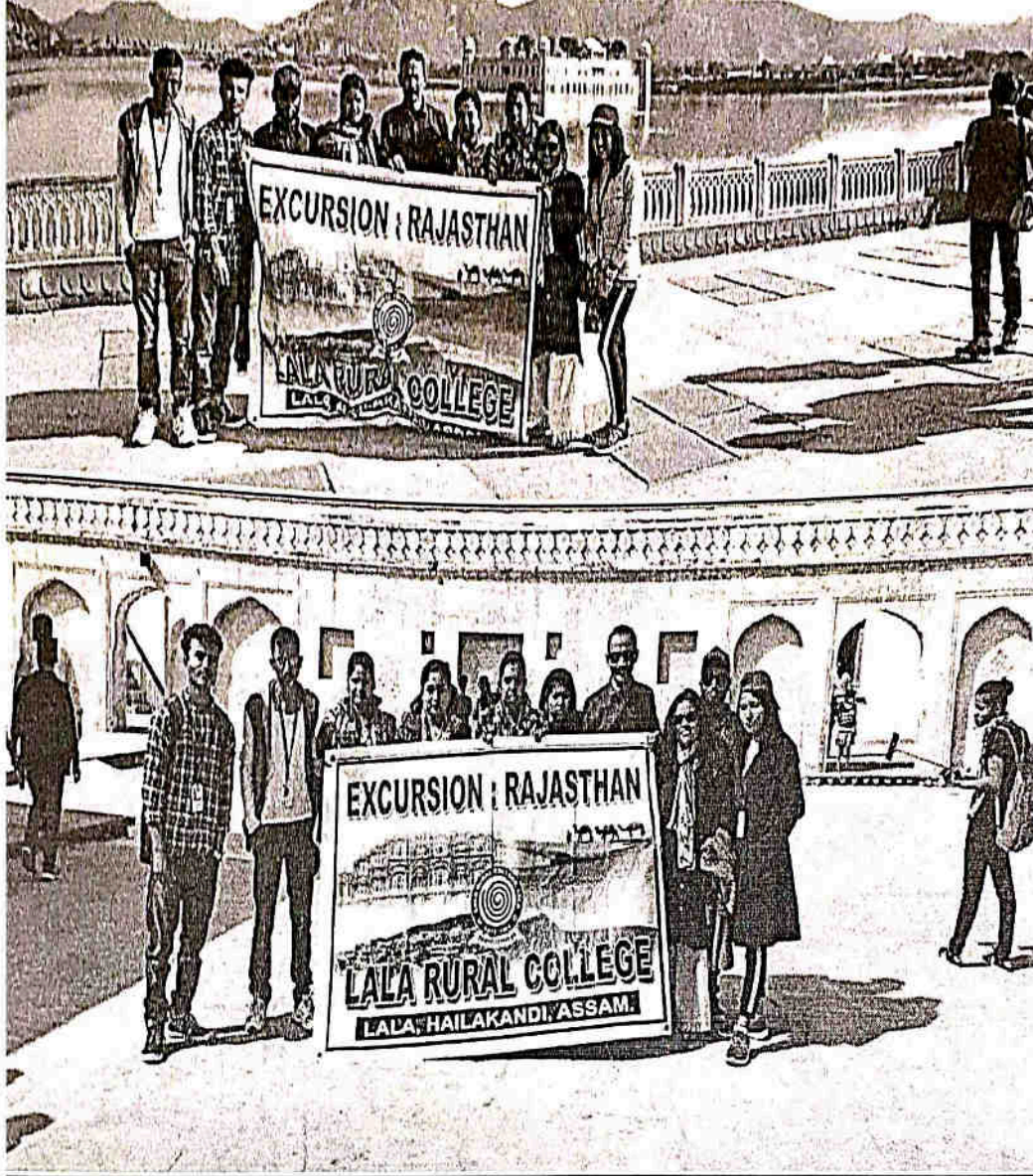
  
Co-ordinator  
Internal Quality Assurance Cell,  
Lala Bural College, Lala





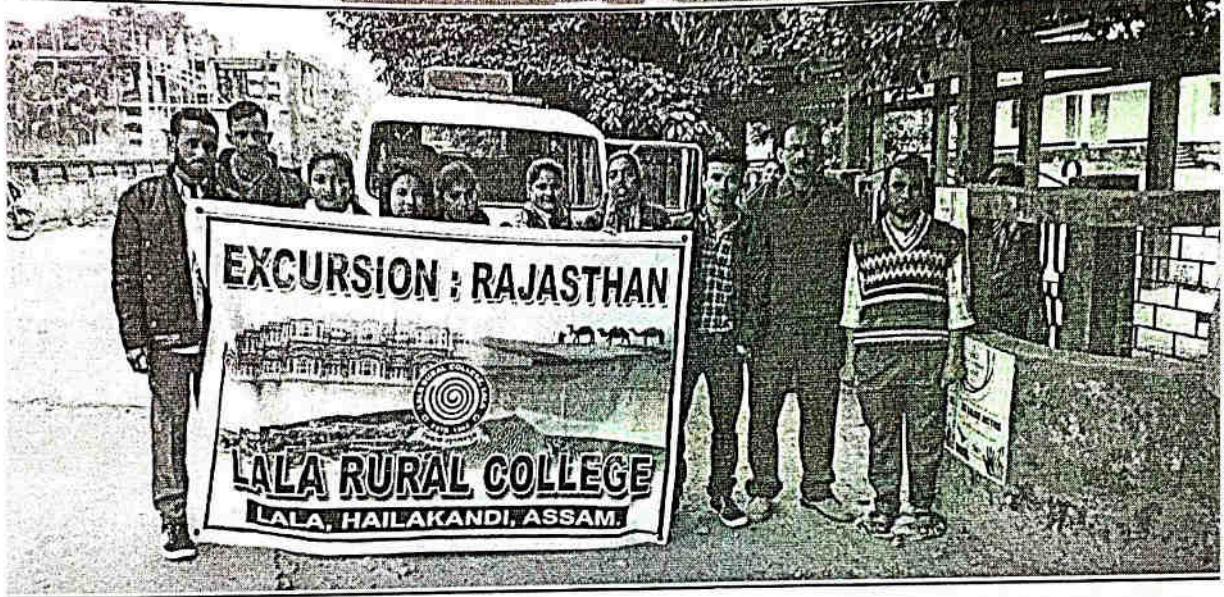
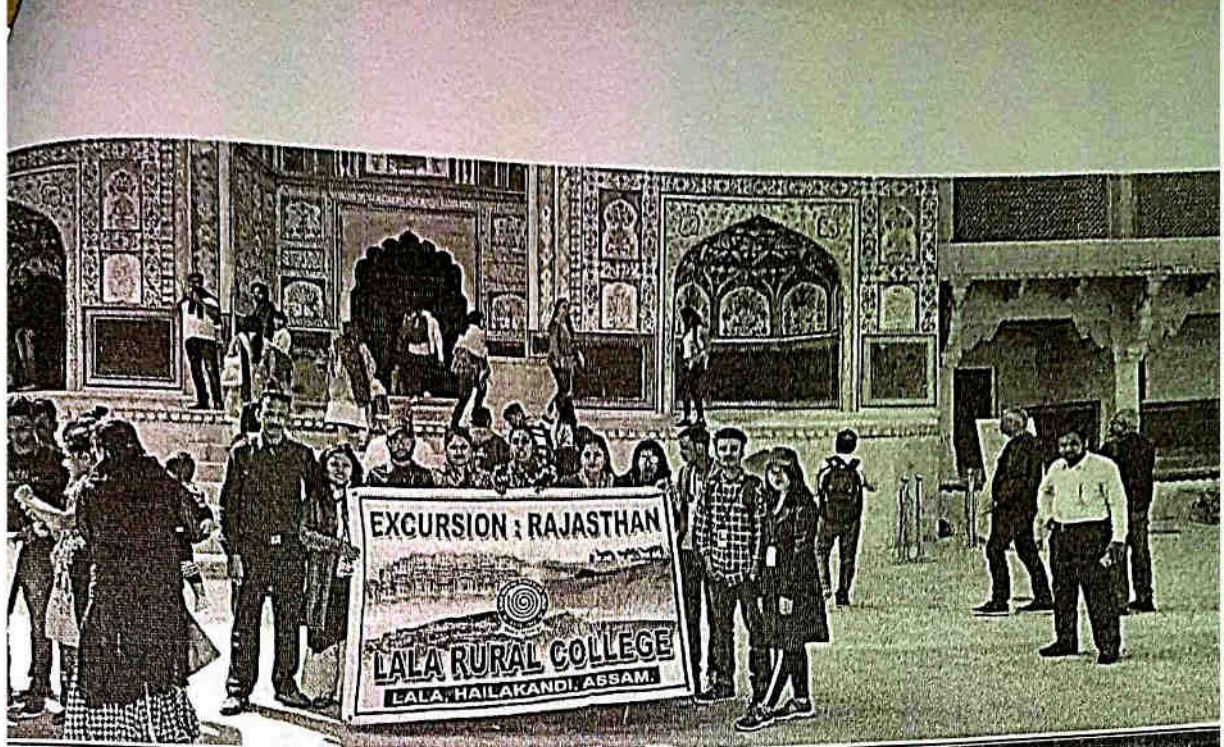
  
Co-ordinator  
Finance Cell,  
Lala Rural College, Lala





*Beeg*  
Co-ordinator  
Internal Quality Assurance Cell,  
Lala





*Beeg*

Co-ordinator  
Lala, Laila





Submitted by Professors in charge

Dr. Tanuj Kumar Dey

&

Dr. Lakshmi Nath

  
Co-ordinator  
Internal Quality Assurance Cell,  
Lala Rural College, Lala




### Summary of the functional MoU

Lala Rural College signed Memorandum of Understanding (MoU) with two colleges, namely S.S College, Hailakandi and S.K. Roy College, Katlicherra with a view to encouraging creative and collaborative engagement in curricular and extra-curricular activities. The Memorandum of Understanding between Lala Rural College, Lala and S.S College, Hailakandi has been effective since 12<sup>th</sup> January, 2021. The MoU between the two colleges has been signed for the purpose of exchange of Faculty, Staff and Students, sharing academic resources and sharing between IQACs. The MoU will remain in force for a period of five years from the effective date. However, activities under MoU between the two colleges are yet to be done; initiatives are on; correspondences have been being made. In the coming academic sessions, faculty and student exchange programmes are likely to be realized.

The Memorandum of Understanding between Lala Rural College, Lala and S.K. Roy College, Katlicherra has been effective since 21<sup>st</sup> December, 2021 in order to develop collaborative activities in the academic areas of mutual interest, on a basis of equality and reciprocity. The MoU will remain in force for a period of five years, commencing from the effective date. Accordingly, on the basis of MoU, four instances of faculty exchanges between the concerned colleges were hitherto resulted. Dr. Manas Sinha, a faculty from English department, Lala Rural College took classes at S.K. Roy College, Katlicherra on two occasions, one being a workshop. On 7<sup>th</sup> January, 2022 Dr. Sinha conducted a class of TDC 1<sup>st</sup> Semester on General English on Tolstoy's "God Sees the Truth but Waits" in which 134 numbers of students attended. On 11<sup>th</sup> January, 2022 Dr. Sinha was invited in the One-Day workshop held at S.K. Roy College as a resource person on "Travel Writing: Reflections of Social and Community Life with particular reference to Verrier Elwin's *A Pilgrimage to Tawang*" in which 142 numbers of students attended. Dr. Manish Roy, a faculty from the department of Economics, S.K. Roy College took two classes at Lala Rural College under Faculty Exchange Programme. On 28<sup>th</sup> February, 2022 Dr Roy conducted a class for Honours students of TDC 1<sup>st</sup> Semester on the topic of Derivative rules of differentiation. He took a class of SECon the topic of Introduction to Probability Theory on 4<sup>th</sup> March, 2022. The class was meant for students of 3<sup>rd</sup> Semester having opted for DSC I where as many as 10 numbers of students were present. Talks are on for such more faculty exchange programmes for the academic benefits of the students of both colleges. In the next academic sessions, student exchange programmes, collaborative conferences and workshops are likely to be conducted.

Relevant photographs enclosed herewith

  
Co-ordinator  
Internal Quality Assurance Cell,  
Lala Rural College, Lala

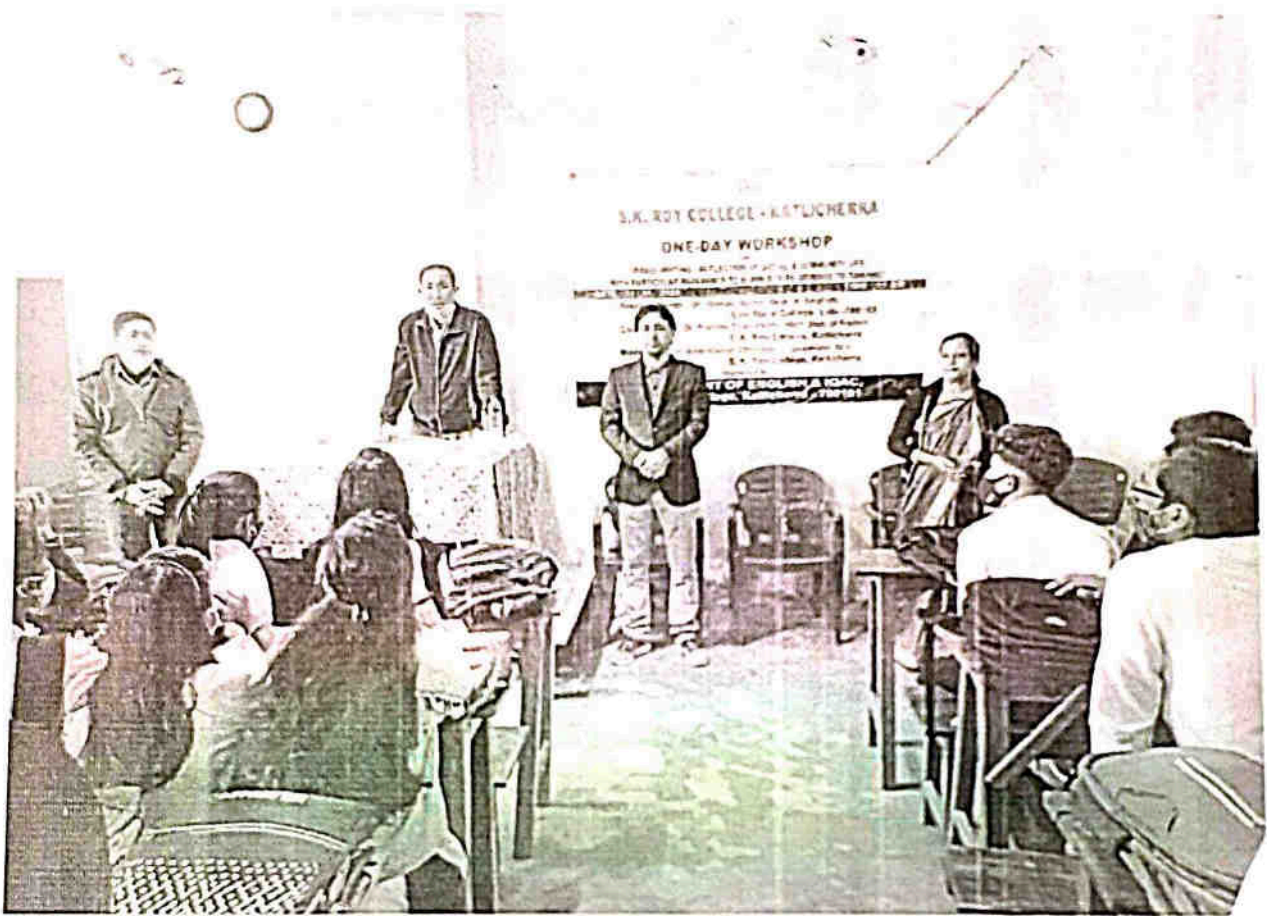



*Sehaj*  
Co-ordinator  
Internal Quality Assurance Cell,  
Lala Rural College, Lala



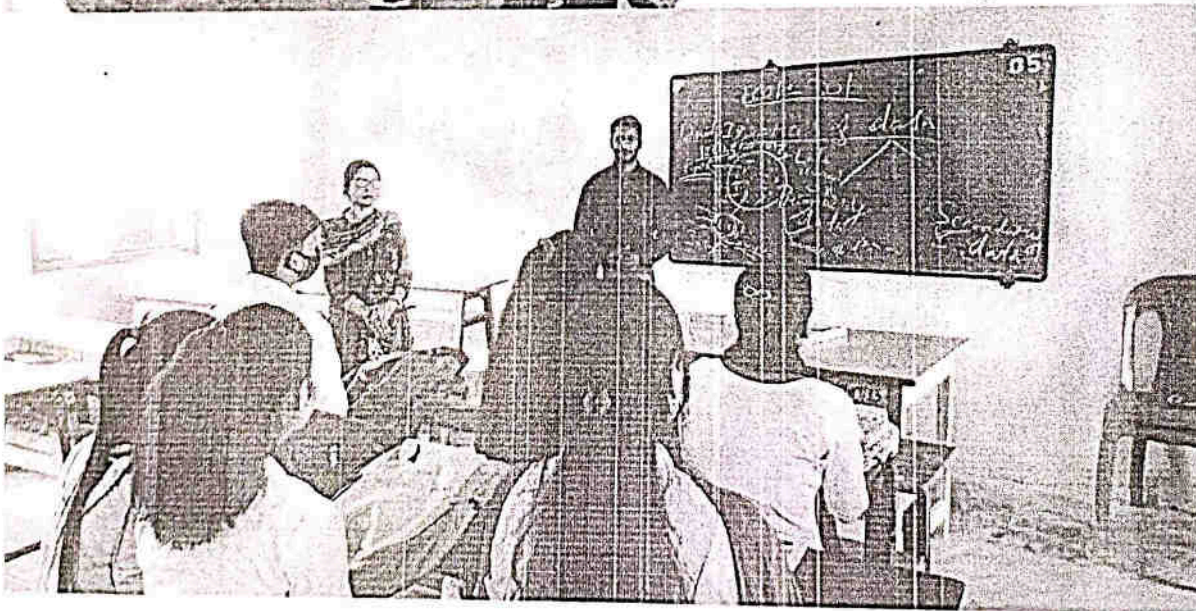
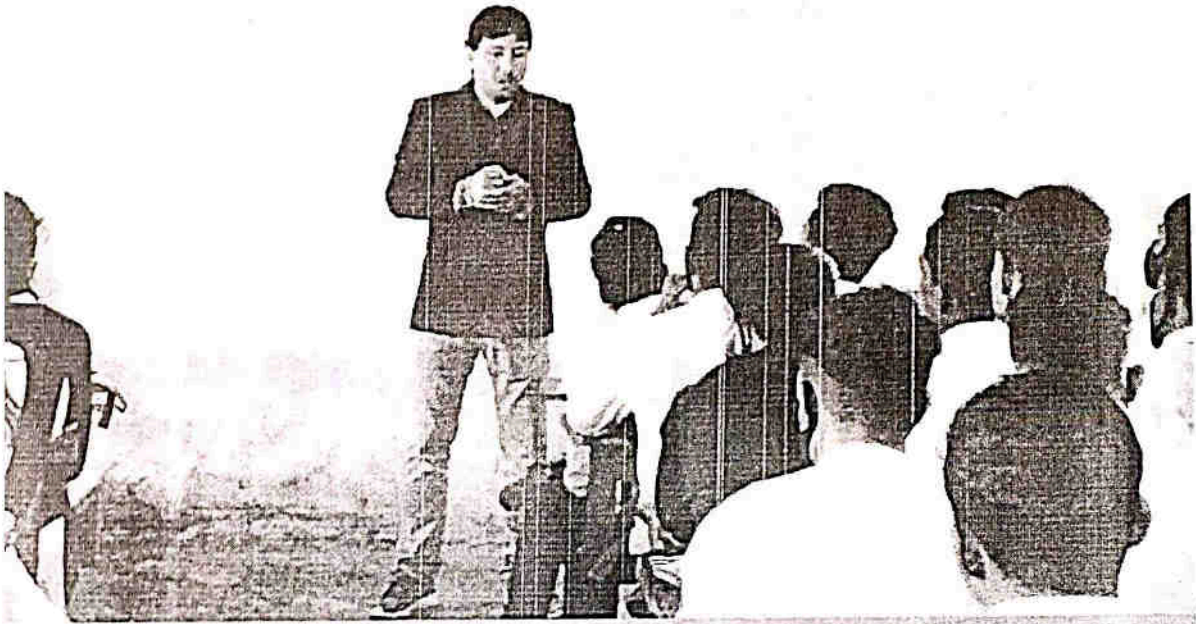


*[Handwritten Signature]*  
Co-ordinator  
Internal Quality Assurance Cell,  
Lala Rural College, Lala

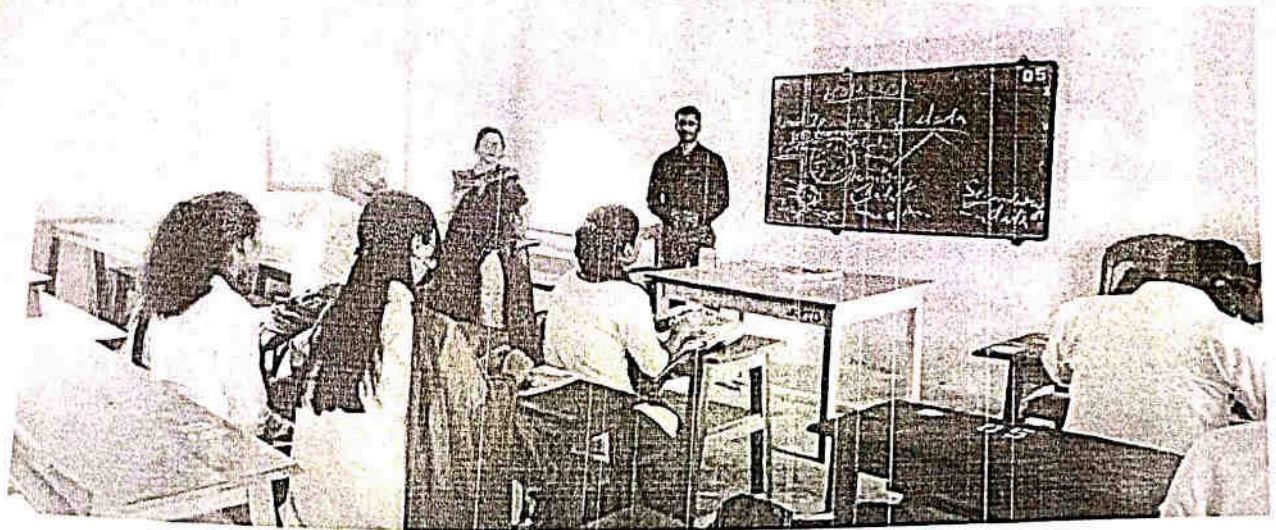


  
Co-ordinator  
Internal Quality Assurance Cell,  
Late S.K. Roy College, Lala






*Banj*  
Co-ordinator  
Internal Quality Assurance Cell,  
Lala Lalai College, Lala



Sd/-


Dr. Ng. DayamaySingha  
Coordinator, IQAC,  
Lala Rural College, Lala


  
Co-ordinator  
Lala Quality Assurance Cell,  
Lala Rural College, Lala



An extract copy of the resolution no.1 of the departmental meeting of economics department, dated 26/02/2022 with Dr. Manindra Singha (HOD) in chair.

It is resolved that, as per MOU signed by Lala Rural Collage, Lala and S.K. Roy College, Katlicherra, on Faculty Exchange Programme, Dr. Manish Roy (Assistant Professor, Department of Economics) be invited to take the class of T.D.C. 3<sup>rd</sup> Semester (Honours and SEC) of Economics department on 28/04/2022 and 04/03/2022.

  
(HOD)  
Dr. Manindra Singha  
Lala Rural College, Lala

  
Co-ordinator  
Internal Quality Assurance Cell,  
Lala Rural College, Lala